



Location: _____
 Engineer: _____
 Submitted to: _____
 Submitted by: _____
 Reference: _____

Model Number: AO24-24N2-M1 / AAH-24N2-BM1

Approval: _____
 Date: _____
 Construction: _____
 Unit #: _____
 Drawing #: _____



INDOOR SPECIFICATION		
Indoor Air Flow (Turbo/H/M/L/S) (CFM)	824/759/695/630/630	
Indoor Noise Level (T/H/M/L/S) (dBA)	44/44/42/29/29	
Dimension (W×D×H)	inch	21 x 17-1/2 x 45
	mm	534 x 445 x 1143
Package (W×D×H)	inch	26-5/8 x 20-7/8 x 48-5/8
	mm	675 x 530 x 1235
Net/Gross Weight	lbs	104/126
	kg	47.3/57.1

OUTDOOR SPECIFICATION		
Compressor Type	ROTARY	
Refrigerant	R454B	
Factory Charge	620ml	
Refrigerant Oil	VG74	
Outdoor Air Flow (Max) (CFM)	2236.7	
Outdoor Noise Level (dBA)	58.5	
Dimension (W×D×H)	inch	37-1/4 x 16-1/8 x 31-7/8
	mm	946 x 410 x 810
Package (W×D×H)	inch	42-7/8 x 19-5/8 x 34-7/8
	mm	1090 x 500 x 885
Net/Gross Weight	lbs	122/132
	kg	55.4/60.0

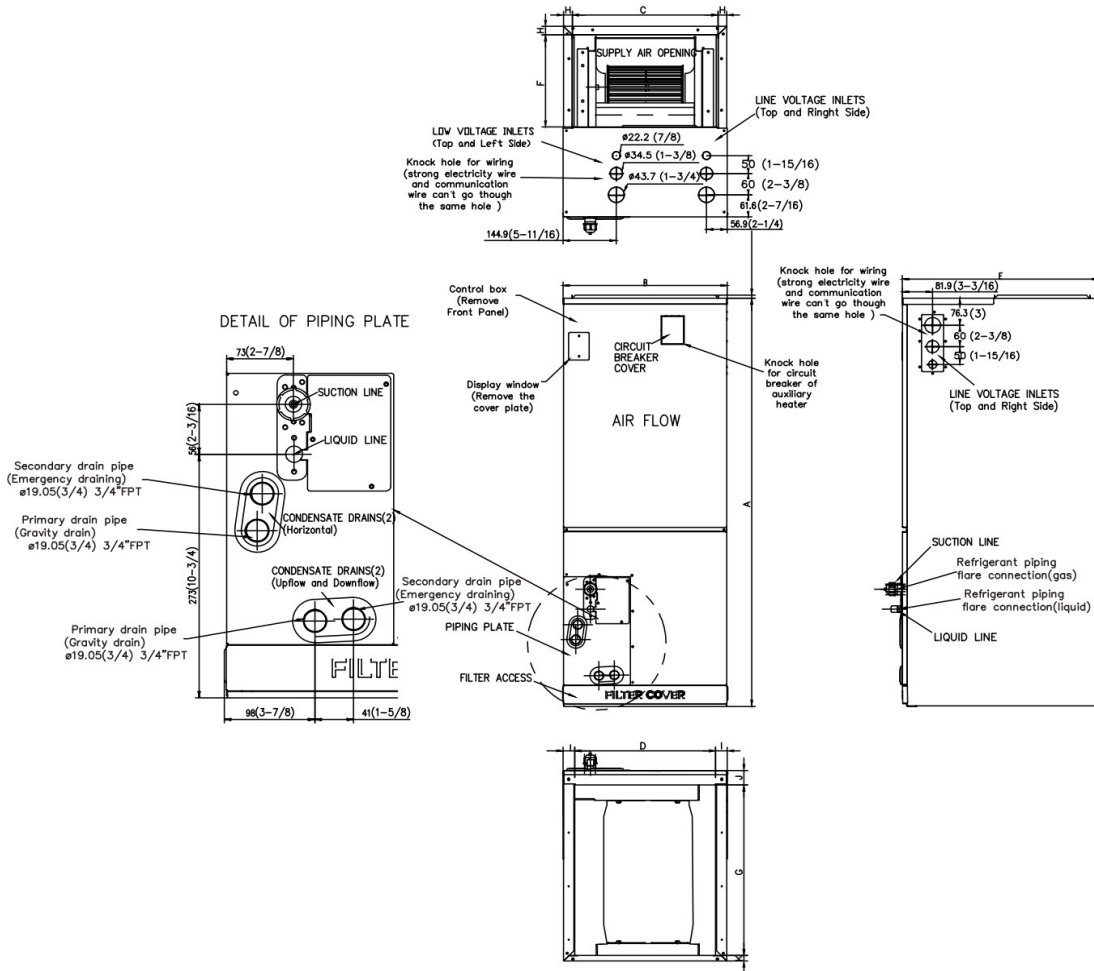
EFFICIENCY			
Cooling		Heating	
SEER2	19.7	HSPF2-4	9.0
EER2	11.7	COP	3.5

PERFORMANCE of Cooling	
Cooling (Btu/hr)	
Rated Capacity	24000
Min/Max Capacity	6700~29600
Moisture Removal	2.6
Standard Operating Range	-13°F~122°F (-25°C~50°C)
Rated Cooling Conditions:	Indoor: 80°F DB/67°F WB Outdoor: 95°F DB/75°F WB

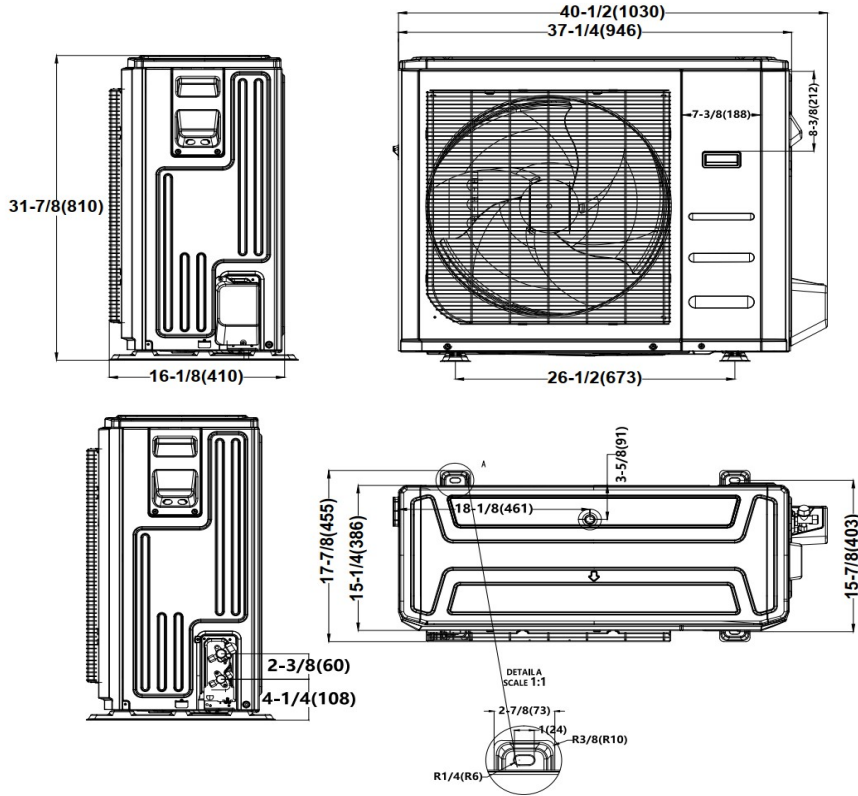
PERFORMANCE of Heating	
Heating (Btu/hr)	
1. @ 47°F Rated (Min/Max)	25000(5800~33800)
2. @ 17°F Rated	17600
3. @ 5°F Max: Capacity / COP	18000/2.2
Standard Operating Range	-13°F~75°F (-25°C~24°C)
1. Rated Heating Conditions:	Indoor: 70°F DB/60°F WB Outdoor: 47°F DB/43°F WB
2. Rated Heating Conditions:	Indoor: 70°F DB/60°F WB Outdoor: 17°F DB/15°F WB
3. Heating Conditions, Compressor Operating at Max. Frequency	Indoor: 70°F DB/60°F WB Outdoor: 5°F DB/5°F WB

ELECTRICAL	
Power Supply	208/230V, 60Hz, 1Ph
System MCA	24
Connection Wiring	AWG 14-4
System MOCP	25
Compressor RLA	15.4
Outdoor Fan Motor RLA	1
Outdoor Fan Motor W	120
Indoor Fan Motor RLA	3
Indoor Fan Motor W	250
System Power Input @ Cooling (W)	2051(600 ~ 2840)
System Power Input @ Heating (W)	2076(410 ~ 2950)
MCA: Min. circuit amps (A)	MOCP: Max. over current protection (A)
RLA: Rated load amps (A)	W: Fan motor rated output (W)

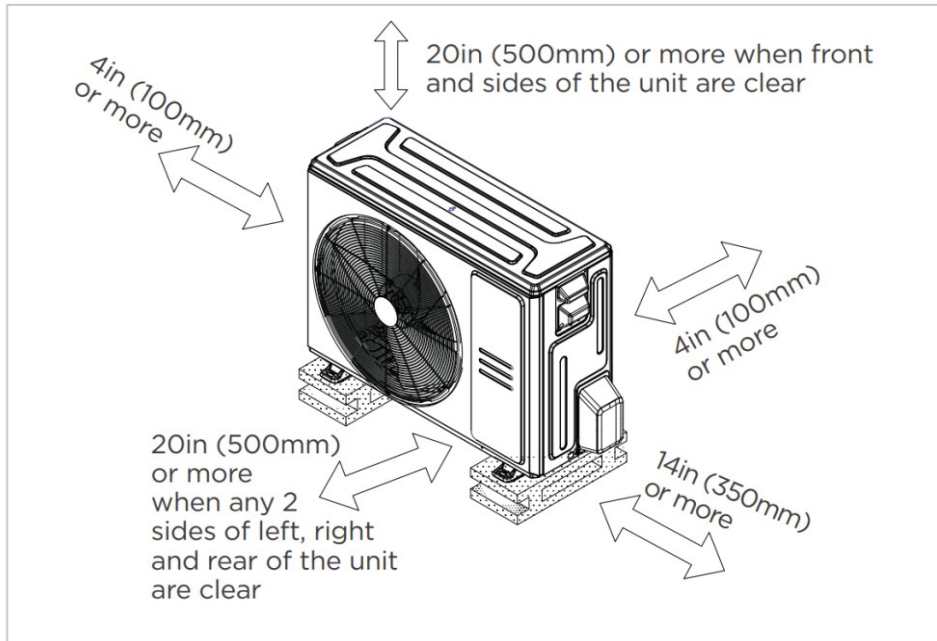
PIPING	
Liquid Size	3/8in (9.52mm)
Gas Size	5/8in (15.9mm)
Drain Size	5/8in (15.88mm)
Max. Piping Length	164ft (50m)
Max. Height Difference	82ft (25m)
Max. Pre-charged Length	24.6ft (7.5m)
Refrigerant Pre-charged Amount	70.55oz (2000g)
Additional Charge of Refrigerant	0.32oz/ft (30g/m)
Connection Method	Flared



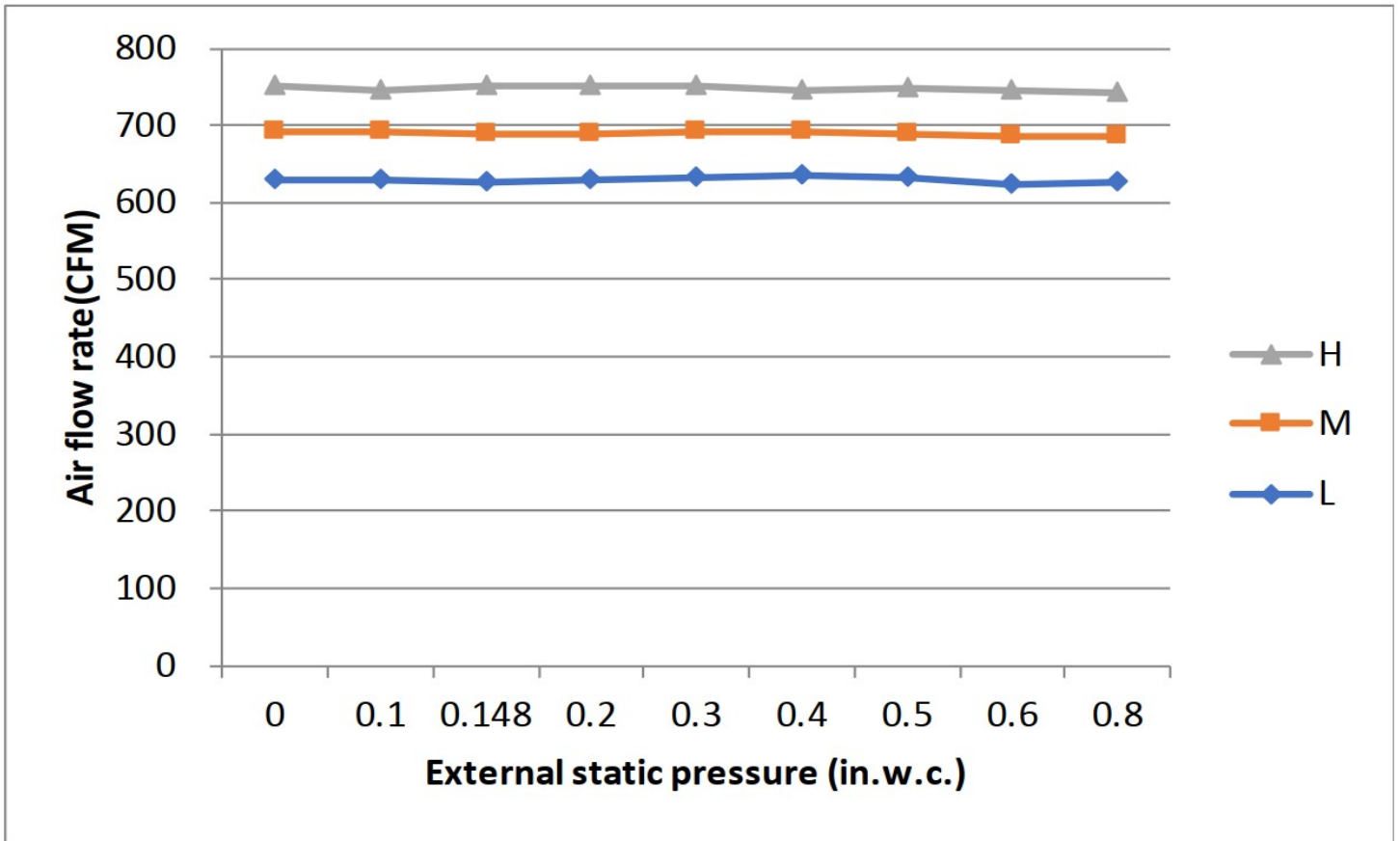
Dimensions		Model		18k/24k		30k/36k		48k/60k	
		inch	mm	inch	mm	inch	mm		
A	Model Height	45	1143	49	1245	53	1346		
B	Model Width	17-1/2	445	21	534	24-1/2	622		
C	Supply Air Opening Width	15-5/8	397	19-1/8	486	22-5/8	575		
D	Return Air Opening Width	15-1/8	384	18-5/8	473	22-1/8	562		
E	Model Depth	21	534	21	534	21	534		
F	Supply Air Opening Depth	10-1/4	260	10-1/4	260	10-1/4	260		
G	Return Air Opening Depth	18-3/4	476	18-3/4	476	18-3/4	476		
H	Supply Air Opening Clearance	15/16	24	15/16	24	15/16	24		
I	Return Air Opening Side Clearance	1-1/4	32	1-1/4	32	1-1/8	28		
J	Return Air Opening Front Clearance	1-1/2	38	1-5/8	41	1-5/8	41		
K	Return Air Opening Back Clearance	5/8	16	5/8	16	3/4	19		



Installation Instruction



☑ Meets all special requirements shown in Installation Clearance Requirements above.



Features

- Multi-position installation: horizontal(left or right), vertical(up or down)
- Aluminum Coil
- Constantly Air Flow system up to 0.80 In.W.G
- 1 inch R4.2 fiberglass free insulation reduces condensation and boosts efficiency(optional)
- Optional Auxiliary heat kit up to 25kW
- Easy Maintenance
- Multiple control options available:
 - Two way communication wired controller:120N(X6)
 - Two way communication wired controller with built-in WiFi:120N(X6W)
 - Wireless remote controller
 - Third-Party 24V Thermostat
- High efficiency up to 19.7 SEER2, 12.1 EER2, 9.8 HSPF2
- Chassis heater and crankcase heater equipped as standard