



Model Number: AAH-36N2-CM1

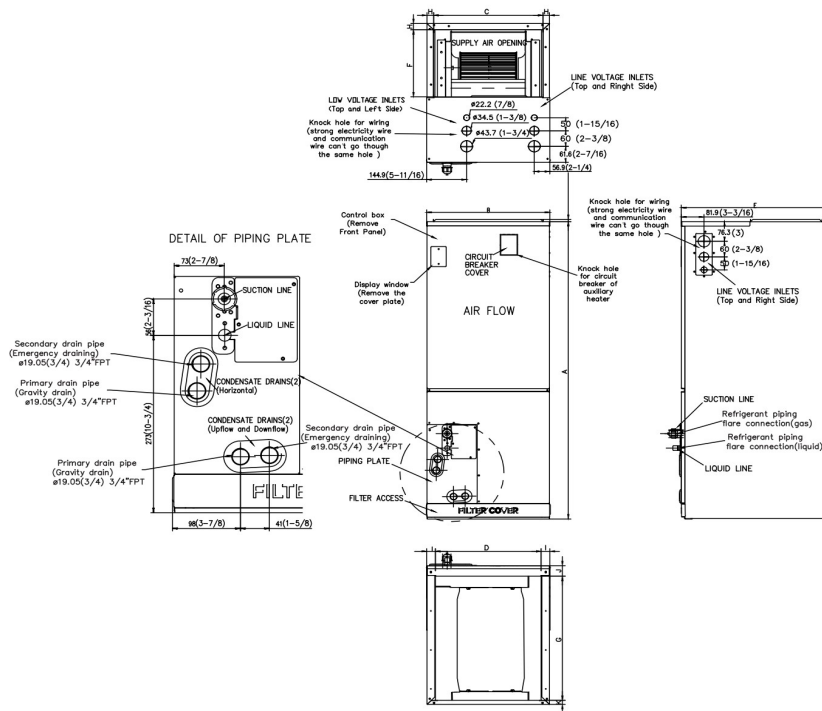
Location: _____
 Engineer: _____
 Submitted to: _____
 Submitted by: _____
 Reference: _____

Approval: _____
 Date: _____
 Construction: _____
 Unit #: _____
 Drawing #: _____



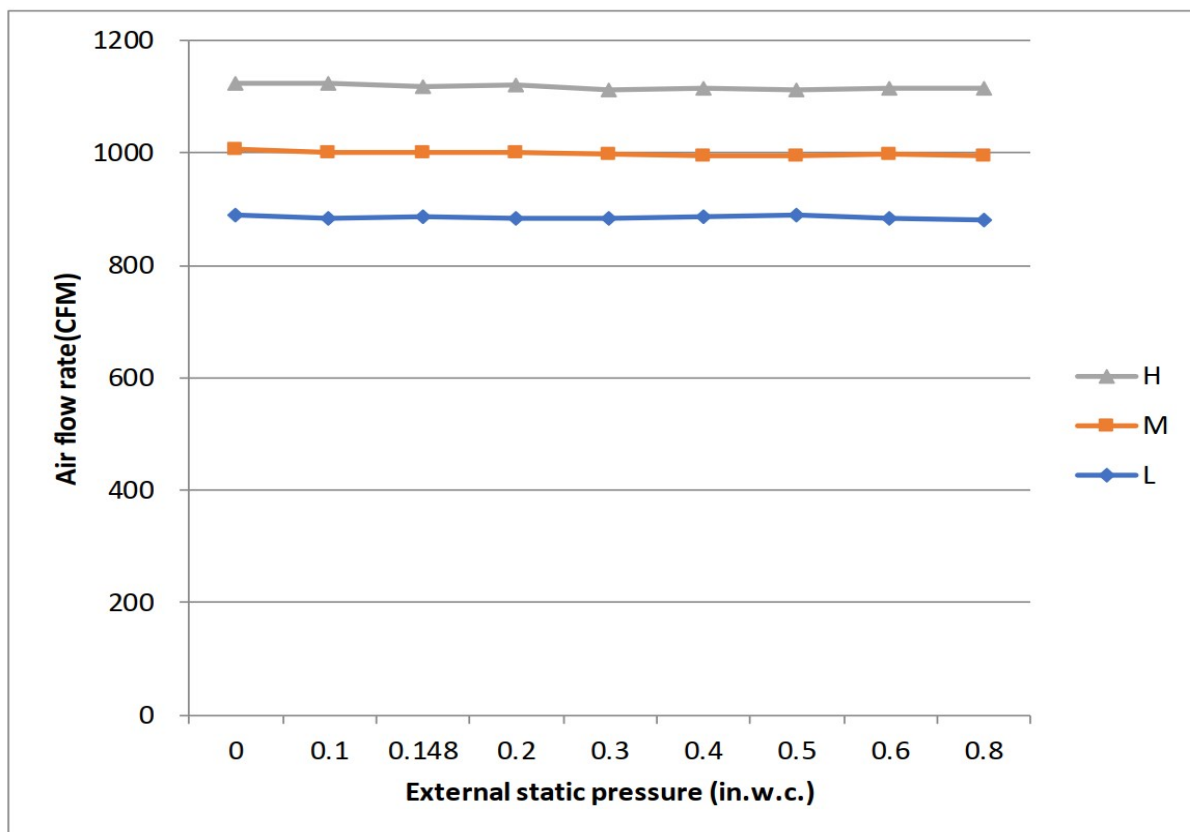
| Item | Unit | Specification |
|--|--------------|-------------------------------|
| Performance Data | | |
| Cooling Capacity | Btu/h | 36000(10600~37700) |
| Heating Capacity | Btu/h | 37000(5000~38800) |
| Design Pressure | PSIG | 550/340 |
| Refrigerant Type | - | R454B |
| Liquid Side | inch(mm) | 3/8in (9.52mm) |
| Gas Side | inch(mm) | 5/8in (15.9mm) |
| Indoor Operation Range of Cooling | Deg.°F (°C) | 60°F~90°F (16°C~32°C) |
| Indoor Operation Range of Heating | Deg.°F (°C) | 32°F~86°F (0°C~30°C) |
| Electrical | | |
| Normal Operational Voltage | V, Hz, Ph | 208/230V,60Hz,1Ph |
| Voltage Range | V | 187-253 |
| Connection Wiring | - | AWG 14-4 |
| Indoor Fan Motor Model | - | ZKFD-375-8-1-1 |
| Indoor Fan Motor Output | W | 375 |
| Indoor Fan Motor RLA | A | 4.5 |
| Indoor Fan Motor Speed(Hi/Mi/Lo) | r/min | / |
| Air Flow & Noise Level | | |
| Indoor Air Flow (Turbo/Hi/Mi/Lo/Si) | CFM | 1189 / 1083 / 971 / 865 / 865 |
| Indoor Noise Level (Turbo/Hi/Mi/Lo/Si) | dB(A) | 48/48/45/31/31 |
| Moisture Removal | L/H (pint/H) | 3.12L/H (6.58pint/H) |
| Dimension (W×D×H) | inch | 21 x 21 x 49 |
| | mm | 534 x 534 x 1245 |
| Package (W×D×H) | inch | 26-5/8 x 24-3/8 x 52-1/2 |
| | mm | 675 x 620 x 1335 |
| Net Weight / Gross Weight | lbs | 128/154 |
| | kg | 58/69.9 |

Indoor Unit Dimension



| Dimensions | Model | 18k/24k | | 30k/36k | | 48k/60k | |
|------------|------------------------------------|---------|------|---------|------|---------|------|
| | | inch | mm | inch | mm | inch | mm |
| A | Model Height | 45 | 1143 | 49 | 1245 | 53 | 1346 |
| B | Model Width | 17-1/2 | 445 | 21 | 534 | 24-1/2 | 622 |
| C | Supply Air Opening Width | 15-5/8 | 397 | 19-1/8 | 486 | 22-5/8 | 575 |
| D | Return Air Opening Width | 15-1/8 | 384 | 18-5/8 | 473 | 22-1/8 | 562 |
| E | Model Depth | 21 | 534 | 21 | 534 | 21 | 534 |
| F | Supply Air Opening Depth | 10-1/4 | 260 | 10-1/4 | 260 | 10-1/4 | 260 |
| G | Return Air Opening Depth | 18-3/4 | 476 | 18-3/4 | 476 | 18-3/4 | 476 |
| H | Supply Air Opening Clearance | 15/16 | 24 | 15/16 | 24 | 15/16 | 24 |
| I | Return Air Opening Side Clearance | 1-1/4 | 32 | 1-1/4 | 32 | 1-1/8 | 28 |
| J | Return Air Opening Front Clearance | 1-1/2 | 38 | 1-5/8 | 41 | 1-5/8 | 41 |
| K | Return Air Opening Back Clearance | 5/8 | 16 | 5/8 | 16 | 3/4 | 19 |

Fan Performance For Indoor Unit



FEATURES

- Multi-position installation: horizontal(left or right), vertical(up or down)
- Aluminum Coil
- Constantly Air Flow system up to 0.80 In.W.G
- 1 inch R4.2 fiberglass free insulation reduces condensation and boosts efficiency(optional)
- Optional Auxiliary heat kit up to 25kW
- Easy Maintenance
- Multiple control options available:
 - Two way communication wired controller:120N(X6)
 - Two way communication wired controller with built-in WiFi:120N(X6W)
 - Wireless remote controller
 - Third-Party 24V Thermostat
- High efficiency up to 18.7 SEER2, 12 EER2, 10 HSPF2
- 100% heat output at 5F*
- Energy Star and Cold Climate Energy Star certified
- Chassis heater and crankcase heater equipped as standard

* Rated cooling capacity/heating capacity at 5F>=100%