



Model Number: AAH-24N2-BM1

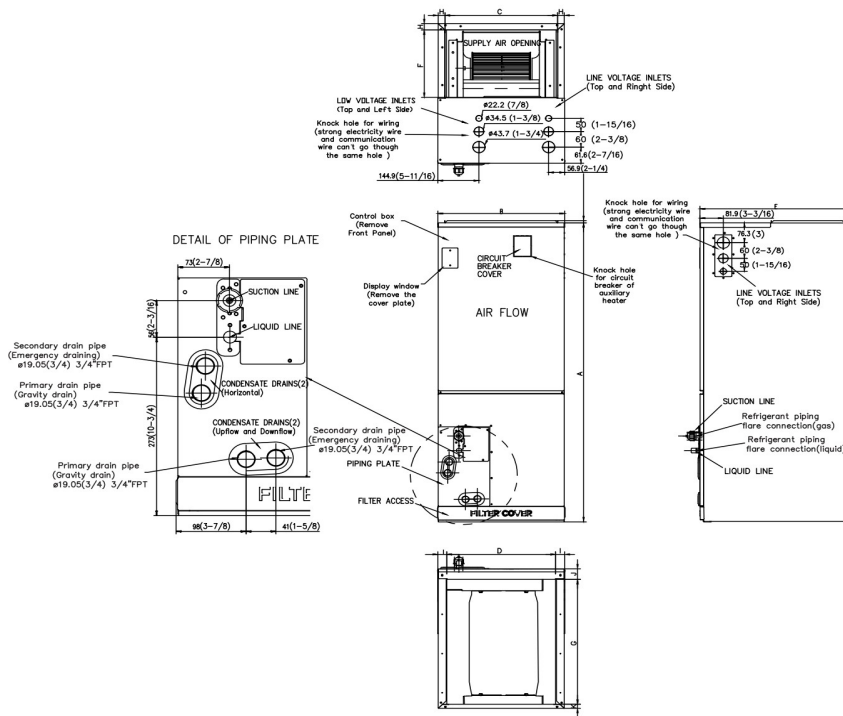
Location: \_\_\_\_\_  
 Engineer: \_\_\_\_\_  
 Submitted to: \_\_\_\_\_  
 Submitted by: \_\_\_\_\_  
 Reference: \_\_\_\_\_

Approval: \_\_\_\_\_  
 Date: \_\_\_\_\_  
 Construction: \_\_\_\_\_  
 Unit #: \_\_\_\_\_  
 Drawing #: \_\_\_\_\_



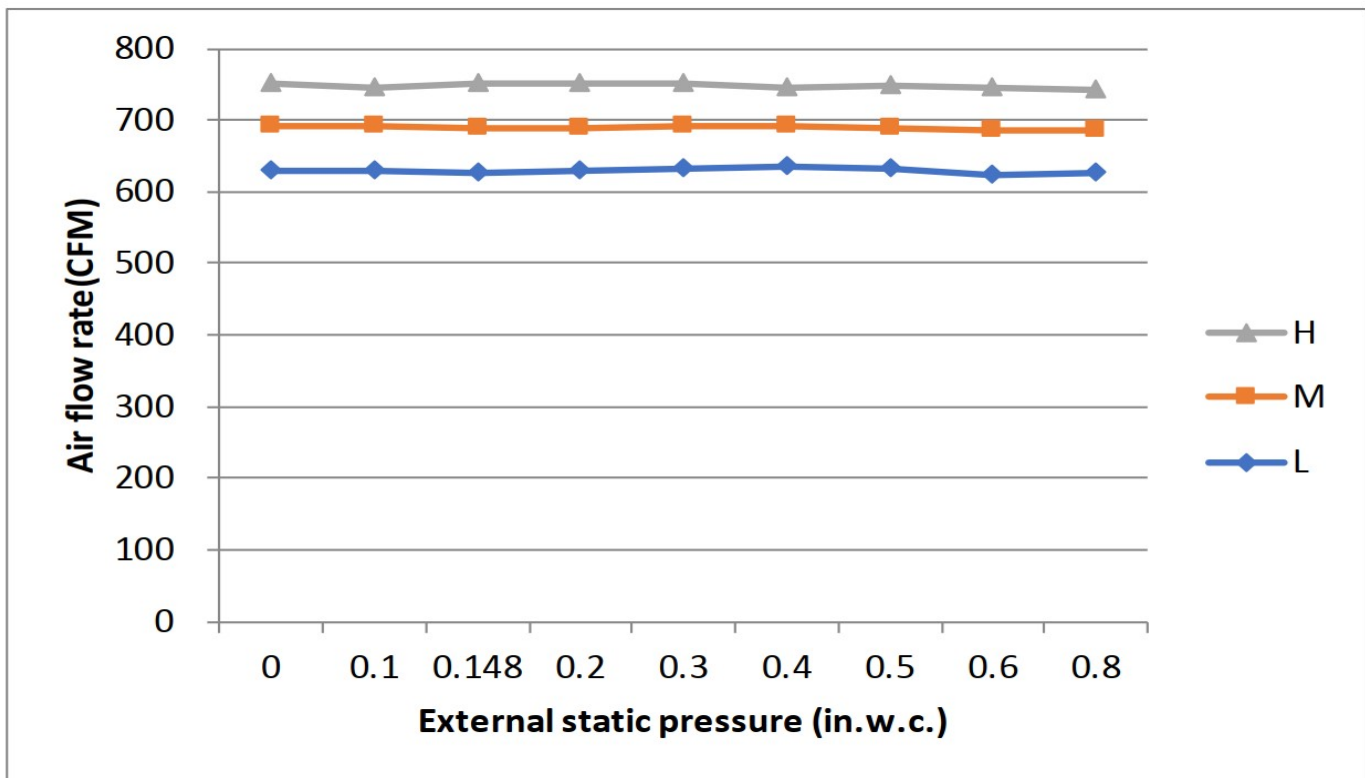
Item	Unit	Specification
<b>Performance Data</b>		
Cooling Capacity	Btu/h	24000(6700~29600)
Heating Capacity	Btu/h	25000(5800~33800)
Design Pressure	PSIG	550/340
Refrigerant Type	-	R454B
Liquid Side	inch(mm)	3/8in (9.52mm)
Gas Side	inch(mm)	5/8in (15.9mm)
Indoor Operation Range of Cooling	Deg.°F (°C)	60°F~90°F (16°C~32°C)
Indoor Operation Range of Heating	Deg.°F (°C)	32°F~86°F (0°C~30°C)
<b>Electrical</b>		
Normal Operational Voltage	V, Hz, Ph	208/230V,60Hz,1Ph
Voltage Range	V	187-253
Connection Wiring	-	AWG 14-4
Indoor Fan Motor Model	-	ZKFD-250-8-1
Indoor Fan Motor Output	W	250
Indoor Fan Motor RLA	A	3
Indoor Fan Motor Speed(Hi/Mi/Lo)	r/min	/
<b>Air Flow &amp; Noise Level</b>		
Indoor Air Flow (Turbo/Hi/Mi/Lo/Si)	CFM	824 / 759 / 695 / 630 /630
Indoor Noise Level (Turbo/Hi/Mi/Lo/Si)	dB(A)	44/44/42/29/29
Moisture Removal	L/H (pint/H)	2.6L/H (5.49pint/H)
Dimension (W×D×H)	inch	21 x 17-1/2 x 45
	mm	534 x 445 x 1143
Package (W×D×H)	inch	26-5/8 x 20-7/8 x 48-5/8
	mm	675 x 530 x 1235
Net Weight / Gross Weight	lbs	104/126
	kg	47.3/57.1

# Indoor Unit Dimension



Dimensions	Model	18k/24k		30k/36k		48k/60k	
		inch	mm	inch	mm	inch	mm
A	Model Height	45	1143	49	1245	53	1346
B	Model Width	17-1/2	445	21	534	24-1/2	622
C	Supply Air Opening Width	15-5/8	397	19-1/8	486	22-5/8	575
D	Return Air Opening Width	15-1/8	384	18-5/8	473	22-1/8	562
E	Model Depth	21	534	21	534	21	534
F	Supply Air Opening Depth	10-1/4	260	10-1/4	260	10-1/4	260
G	Return Air Opening Depth	18-3/4	476	18-3/4	476	18-3/4	476
H	Supply Air Opening Clearance	15/16	24	15/16	24	15/16	24
I	Return Air Opening Side Clearance	1-1/4	32	1-1/4	32	1-1/8	28
J	Return Air Opening Front Clearance	1-1/2	38	1-5/8	41	1-5/8	41
K	Return Air Opening Back Clearance	5/8	16	5/8	16	3/4	19

# Fan Performance For Indoor Unit



## FEATURES

- Multi-position installation: horizontal(left or right), vertical( up or down)
- Aluminum Coil
- Constantly Air Flow system up to 0.80 In.W.G
- 1 inch R4.2 fiberglass free insulation reduces condensation and boosts efficiency(optional)
- Optional Auxiliary heat kit up to 25kW
- Easy Maintenance
- Multiple control options available:
  - Two way communication wired controller:120N(X6)
  - Two way communication wired controller with built-in WiFi:120N(X6W)
  - Wireless remote controller
  - Third-Party 24V Thermostat
- High efficiency up to 18.7 SEER2, 12 EER2, 10 HSPF2
- 100% heat output at 5F\*
- Energy Star and Cold Climate Energy Star certified
- Chassis heater and crankcase heater equipped as standard

\* Rated cooling capacity/heating capacity at 5F>=100%