



Location: _____
 Engineer: _____
 Submitted to: _____
 Submitted by: _____
 Reference: _____

Model Number: AUO18-36N2-M3 / AUH2-36N2-CM3E

Approval: _____
 Date: _____
 Construction: _____
 Unit #: _____
 Drawing #: _____



| INDOOR SPECIFICATION | | |
|---------------------------------------|-----------------------|--------------------------|
| Indoor Air Flow (Turbo/H/M/L/S) (CFM) | 1189/1083/971/865/865 | |
| Indoor Noise Level (T/H/M/L/S) (dBA) | 48/48/45/28/28 | |
| Dimension (W×D×H) | inch | 21 x 21 x 49 |
| | mm | 534 x 534 x 1245 |
| Package (W×D×H) | inch | 26-5/8 x 24-3/8 x 52-1/2 |
| | mm | 675 x 620 x 1335 |
| Net/Gross Weight | lbs | 129/154 |
| | kg | 58.7/69.8 |

| OUTDOOR SPECIFICATION | | |
|------------------------------|--------|--------------------------|
| Compressor Type | ROTARY | |
| Refrigerant | R454B | |
| Factory Charge | 1000ml | |
| Refrigerant Oil | VG74 | |
| Outdoor Air Flow (Max) (CFM) | 2413.2 | |
| Outdoor Noise Level (dBA) | 63.0 | |
| Dimension (W×D×H) | inch | 37-1/4 x 16-1/8 x 31-7/8 |
| | mm | 946 x 410 x 810 |
| Package (W×D×H) | inch | 42-7/8 x 19-5/8 x 34-7/8 |
| | mm | 1090 x 500 x 885 |
| Net/Gross Weight | lbs | 153/164 |
| | kg | 69.5/74.2 |

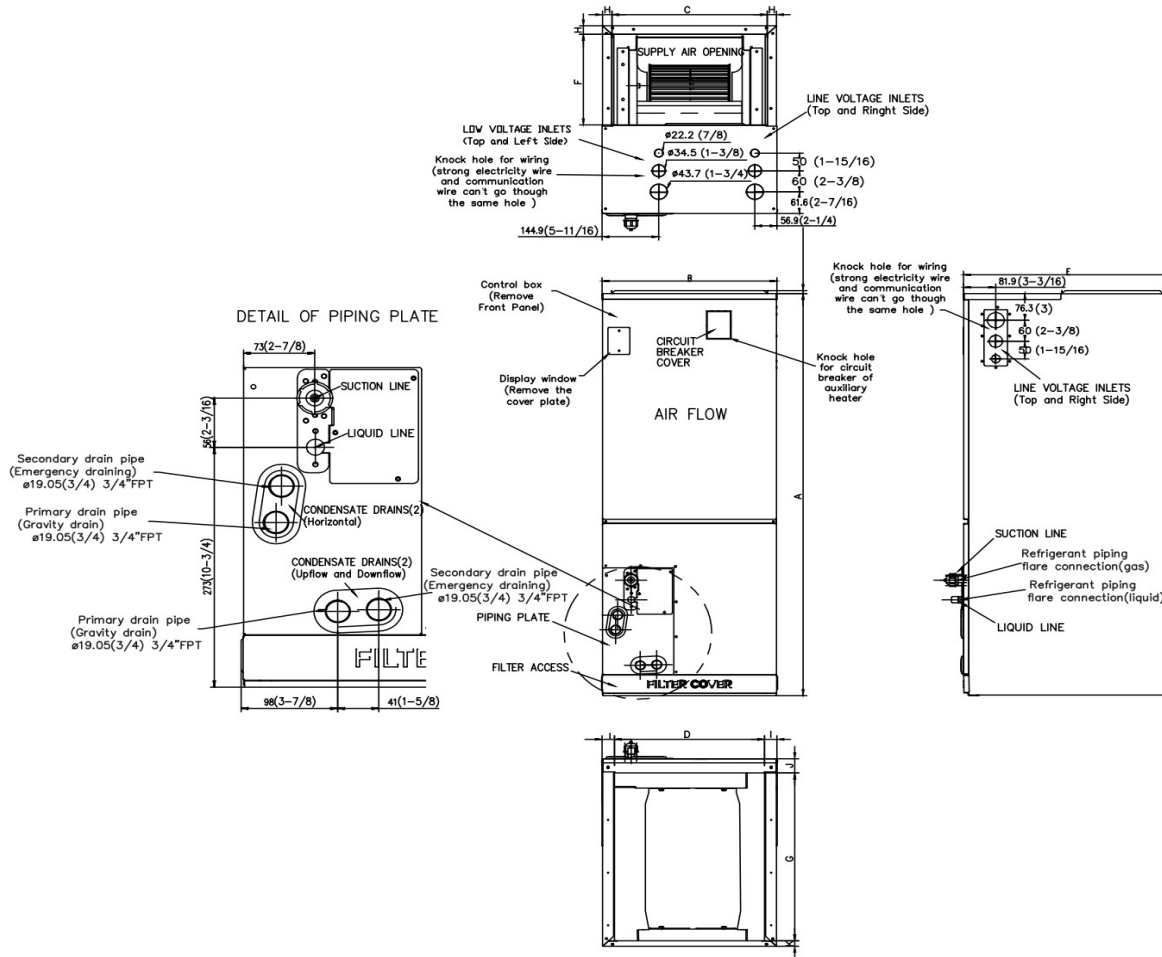
| EFFICIENCY | | | |
|------------|------|---------|-----|
| Cooling | | Heating | |
| SEER2 | 16.1 | HSPF2-4 | 8.7 |
| EER2 | 10.0 | COP | 3.4 |

| PERFORMANCE of Cooling | |
|---------------------------|---|
| Cooling (Btu/hr) | |
| Rated Capacity | 36000 |
| Min/Max Capacity | 8300~38900 |
| Moisture Removal | 3.62 |
| Standard Operating Range | -13°F~-122°F (-25°C~50°C) |
| Rated Cooling Conditions: | Indoor: 80°F DB/67°F WB Outdoor: 95°F DB/75°F WB |

| PERFORMANCE of Heating | |
|---|---|
| Heating (Btu/hr) | |
| 1. @ 47°F Rated (Min/Max) | 36000(6700~41300) |
| 2. @ 17°F Rated | 25600 |
| 3. @ 5°F Max: Capacity / COP | 27000/2 |
| Standard Operating Range | -13°F ~75°F (-25°C~24°C) |
| 1. Rated Heating Conditions: | Indoor: 70°F DB/60°F WB Outdoor: 47°F DB/43°F WB |
| 2. Rated Heating Conditions: | Indoor: 70°F DB/60°F WB Outdoor: 17°F DB/15°F WB |
| 3. Heating Conditions, Compressor Operating at Max. Frequency | Indoor: 70°F DB/60°F WB Outdoor: 5°F DB/5°F WB |

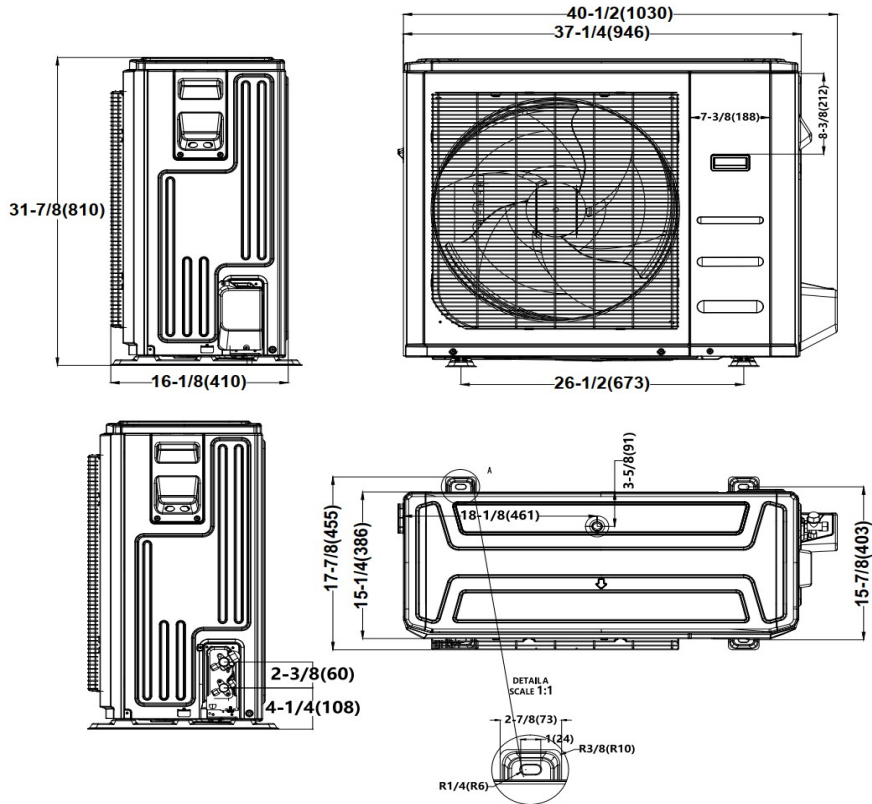
| ELECTRICAL | |
|----------------------------------|---------------------------------------|
| Indoor Power Supply | 115/208/230V, 60Hz, 1Ph |
| Indoor MCA 115V/(208/230V) | 8.0/6.0 |
| Indoor MOP | 15 |
| Outdoor Power Supply | 208/230V, 60Hz, 1Ph |
| Outdoor MCA | 24 |
| Outdoor MOP | 30 |
| Communication Wiring | AWG 20-2 |
| Compressor RLA | 17.5 |
| Outdoor Fan Motor RLA | 1.5 |
| Outdoor Fan Motor W | 120 |
| Indoor Fan Motor RLA | 4.5 |
| Indoor Fan Motor W | 375 |
| System Power Input @ Cooling (W) | 3600(710 ~ 4500) |
| System Power Input @ Heating (W) | 3100(460 ~ 3550) |
| MCA: Min. circuit amps (A) | MOC: Max. over current protection (A) |
| RLA: Rated load amps (A) | W: Fan motor rated output (W) |

| PIPING | |
|----------------------------------|------------------|
| Liquid Size | 3/8in (9.52mm) |
| Gas Size | 3/4in (19mm) |
| Drain Size | 5/8in (15.88mm) |
| Max. Piping Length | 246ft (75m) |
| Max. Height Difference | 98.4ft (30m) |
| Max. Pre-charged Length | 24.6ft (7.5m) |
| Refrigerant Pre-charged Amount | 116.4oz (3300g) |
| Additional Charge of Refrigerant | 0.7oz/ft (65g/m) |
| Connection Method | Flared |

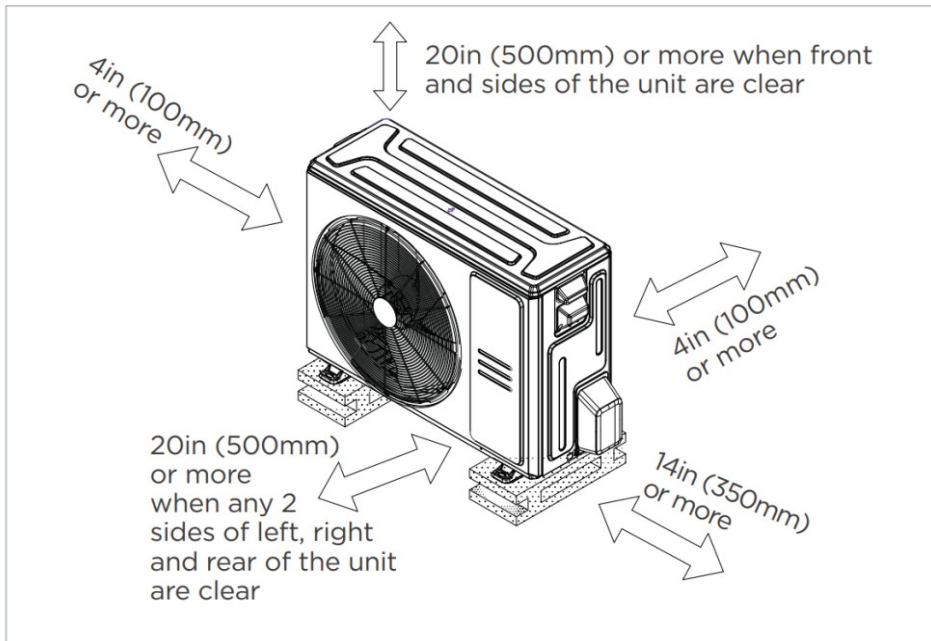


| Dimensions | Model | 18k/24k | | 30k/36k | | 48k/60k | |
|------------|------------------------------------|---------|------|---------|------|---------|------|
| | | inch | mm | inch | mm | inch | mm |
| A | Model Height | 45 | 1143 | 49 | 1245 | 53 | 1346 |
| B | Model Width | 17-1/2 | 445 | 21 | 534 | 24-1/2 | 622 |
| C | Supply Air Opening Width | 15-5/8 | 397 | 19-1/8 | 486 | 22-5/8 | 575 |
| D | Return Air Opening Width | 15-1/8 | 384 | 18-5/8 | 473 | 22-1/8 | 562 |
| E | Model Depth | 21 | 534 | 21 | 534 | 21 | 534 |
| F | Supply Air Opening Depth | 10-1/4 | 260 | 10-1/4 | 260 | 10-1/4 | 260 |
| G | Return Air Opening Depth | 18-3/4 | 476 | 18-3/4 | 476 | 18-3/4 | 476 |
| H | Supply Air Opening Clearance | 15/16 | 24 | 15/16 | 24 | 15/16 | 24 |
| I | Return Air Opening Side Clearance | 1-1/4 | 32 | 1-1/4 | 32 | 1-1/8 | 28 |
| J | Return Air Opening Front Clearance | 1-1/2 | 38 | 1-5/8 | 41 | 1-5/8 | 41 |
| K | Return Air Opening Back Clearance | 5/8 | 16 | 5/8 | 16 | 3/4 | 19 |

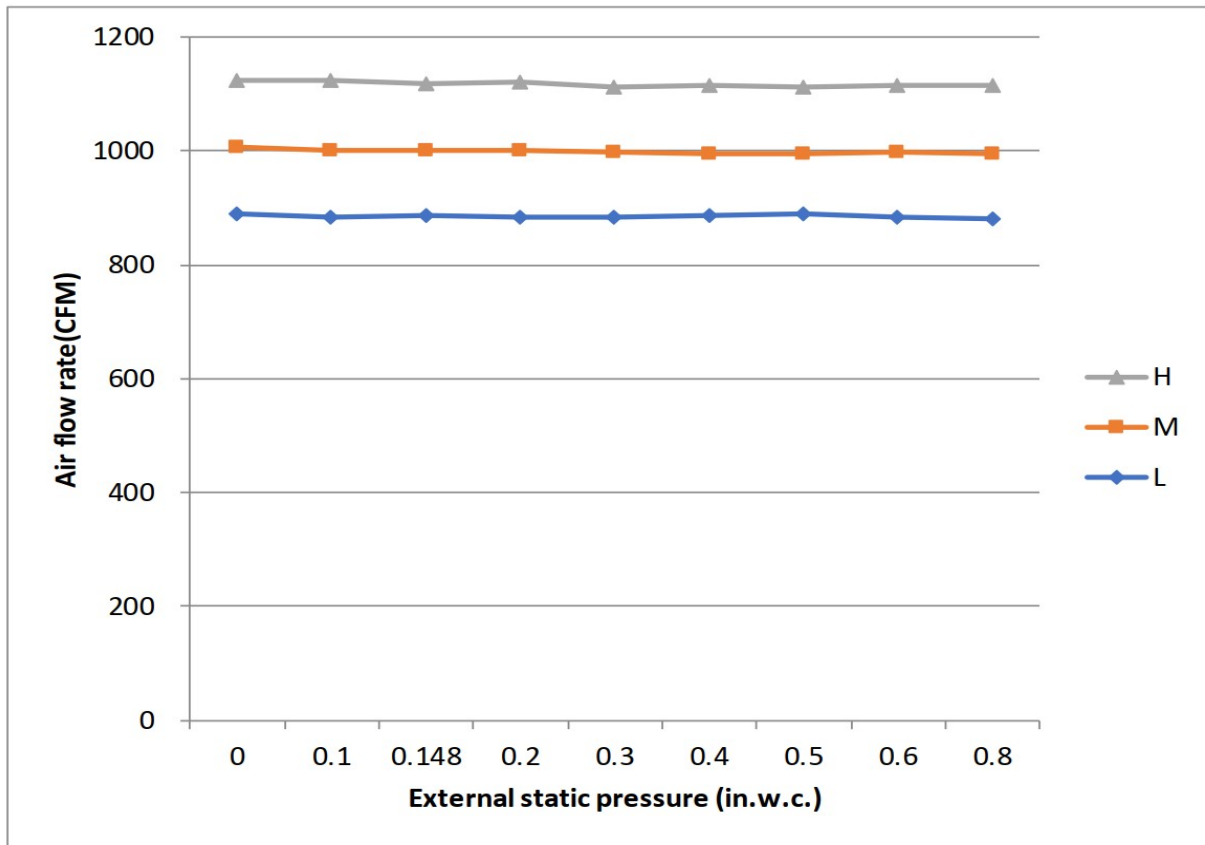
Outdoor Unit Dimension



Installation Instruction



- Meets all special requirements shown in Installation Clearance Requirements above.



Features

- Multi-position installation: horizontal(left or right), vertical(up or down)
- Aluminum Coil
- Constantly Air Flow system up to 0.80 In.W.G
- 1 inch thick R4.2 fiberglass free insulation, reduce condensation and increase efficiency(optional)
- Optional Auxiliary heat kit up to 25kW
- Easy Maintenance
- Multiple controller options available:
 - Optional two way communication wired controller, programmable:120N(X6)
 - Optional two way communication wired controller, programmable, with built-in WiFi, :120N(X6W)
 - Standard Wireless remote controller
 - Can connect with Third-Party 24V Thermostat
- Adapted to RS485 and 24V communication controllers
- High efficiency up to 18.8 SEER2, 11 EER2, 9.7 HSPF2
- Chassis heater and crankcase heater pre-bulit as standard