



Model Number: AUO19-60N2-M3H / AUA-60N2-D28

Location: _____
 Engineer: _____
 Submitted to: _____
 Submitted by: _____
 Reference: _____

Approval: _____
 Date: _____
 Construction: _____
 Unit #: _____
 Drawing #: _____



INDOOR SPECIFICATION		
Dimension (W×D×H)	inch	24-1/2 x 21 x 28
	mm	622 x 533 x 711
Package (W×D×H)	inch	27-3/4 x 26-1/8 x 30-3/8
	mm	705 x 665 x 770
Net/Gross Weight	lbs	81 / 92
	kg	36.8 / 41.9

OUTDOOR SPECIFICATION		
Compressor Type	TWIN-ROTARY	
Refrigerant	R454B	
Factory Charge	1300ml	
Refrigerant Oil	VG75	
Outdoor Air Flow (Max) (CFM)	2,649	
Outdoor Noise Level (dBA)	64	
Dimension (W×D×H)	inch	37-1/2 x 16-3/8 x 52-1/2
	mm	952 x 415 x 1333
Package (W×D×H)	inch	43-1/8 x 19-1/2 x 58-1/4
	mm	1095 x 495 x 1480
Net/Gross Weight	lbs	242 / 275
	kg	110.2 / 124.8

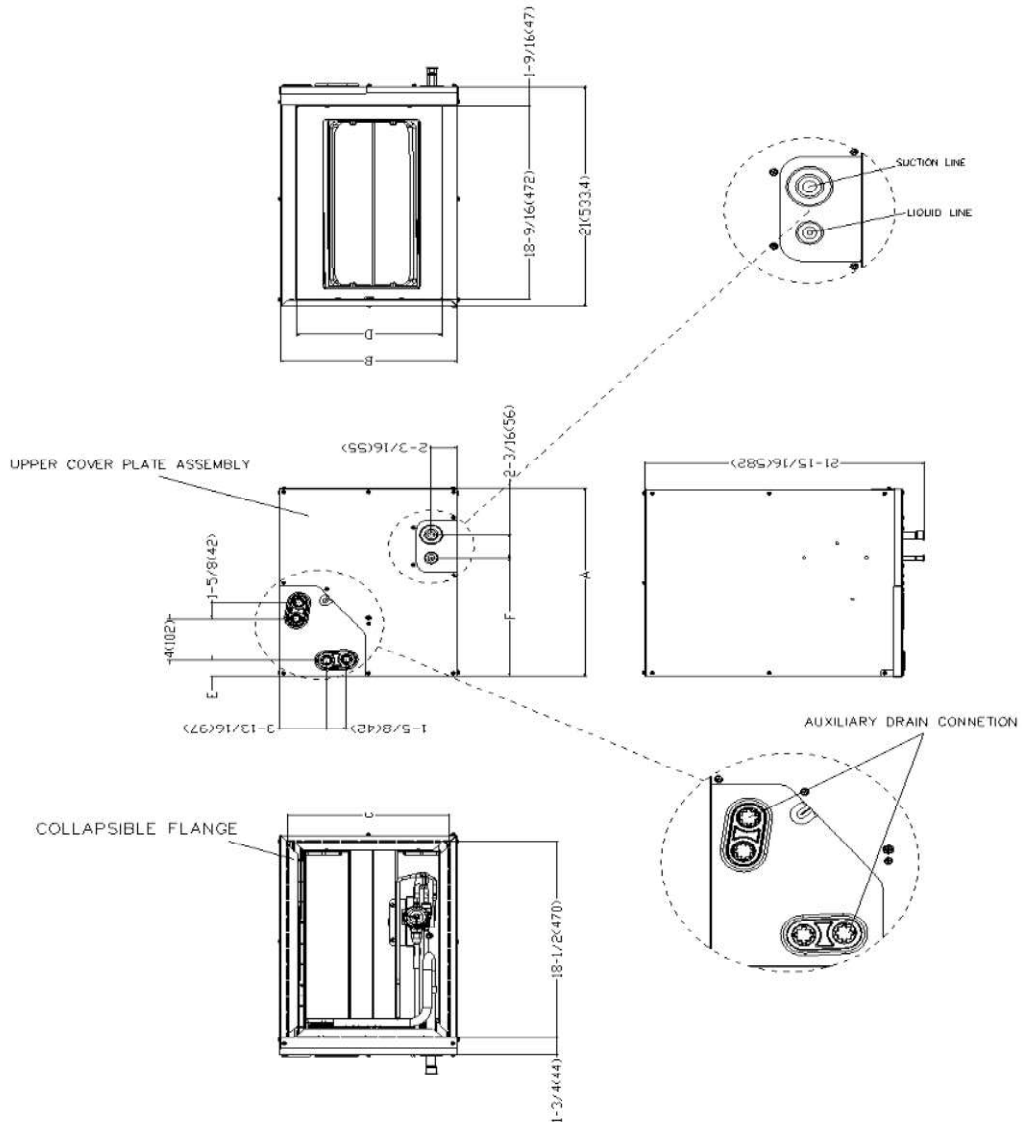
EFFICIENCY			
Cooling		Heating	
SEER2	14.5	HSPF2-4	8.1
EER2	8.8	COP	2.8

PERFORMANCE of Cooling	
Cooling (Btu/hr)	
Rated Capacity	53,000
Min/Max Capacity	17,600~53,400
Moisture Removal	8.5
Standard Operating Range	-22°F~122°F (-30°C~50°C)
Rated Cooling Conditions:	Indoor: 80°F DB/67°F WB Outdoor: 95°F DB/75°F WB

PERFORMANCE of Heating	
Heating (Btu/hr)	
1. @ 47°F Rated (Min/Max)	58,000(21,200~59,000)
2. @ 17°F Rated	36,000
3. @ 5°F Max: Capacity / COP	43,000/1.83
Standard Operating Range	-22°F~75°F (-30°C~24°C)
1. Rated Heating Conditions:	Indoor: 70°F DB/60°F WB Outdoor: 47°F DB/43°F WB
2. Rated Heating Conditions:	Indoor: 70°F DB/60°F WB Outdoor: 17°F DB/15°F WB
3. Heating Conditions, Compressor Operating at Max. Frequency	Indoor: 70°F DB/60°F WB Outdoor: 5°F DB/5°F WB

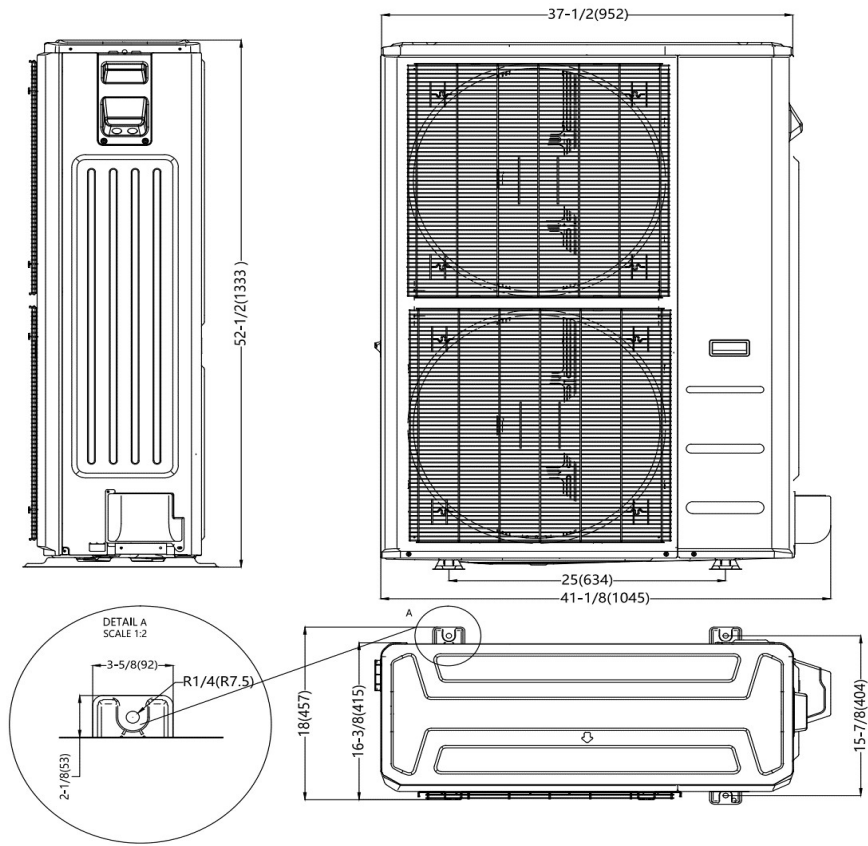
ELECTRICAL	
Indoor Power Supply	24V,60Hz,1Ph
Indoor MCA 115V/(208/230V)	/
Indoor MOP	/
Outdoor Power Supply	208/230,60Hz,1Ph
Outdoor MCA	40.0
Outdoor MOP	40.0
Communication Wiring	AWG 20/2
Compressor RLA	31.0
Outdoor Fan Motor RLA	1.2
Outdoor Fan Motor W	/
Indoor Fan Motor RLA	/
Indoor Fan Motor W	/
System Power Input @ Cooling (W)	6,020 (1,520 ~ 6,040)
System Power Input @ Heating (W)	6,159 (1,580 ~ 6,750)
MCA: Min. circuit amps (A)	MOCP: Max. over current protection (A)
RLA: Rated load amps (A)	W: Fan motor rated output (W)

PIPING	
Liquid Size	3/8in (9.52mm)
Gas Size	3/4in (19mm)
Drain Size	5/8in (15.88mm)
Max. Piping Length	246ft (75m)
Max. Height Difference	98.4ft (30m)
Max. Pre-charged Length	24.6ft (7.5m)
Refrigerant Pre-charged Amount	183oz (5200g)
Additional Charge of Refrigerant	0.7oz/ft (65g/m)
Connection Method	Flared

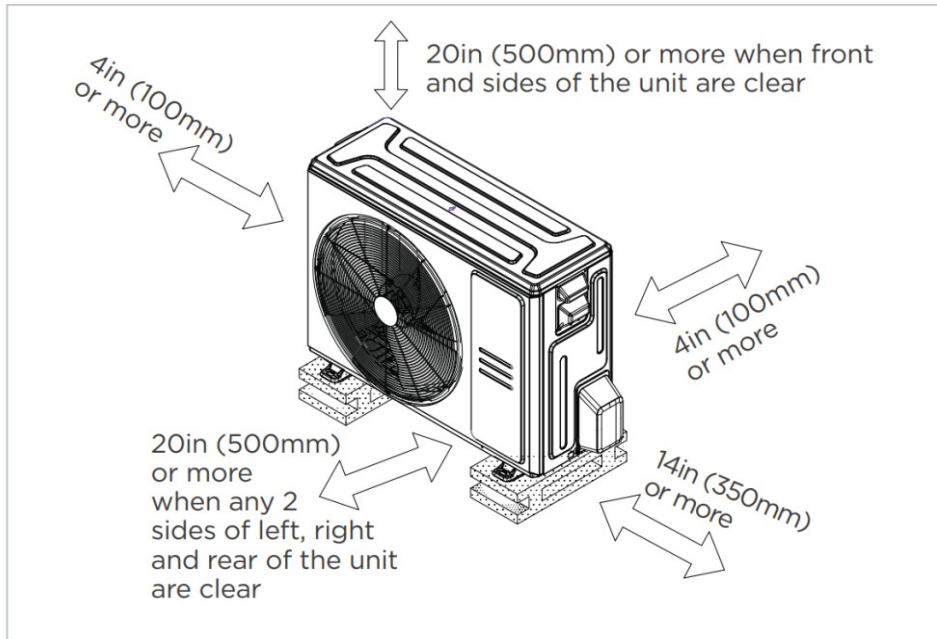


Model		60-D	
Dimensions		inch	mm
A	Model Height	28	711
B	Model Width	24-1/2	622
C	Supply Air Opening Width	23-1/4	591
D	Return Air Opening Width	23-1/8	587
E	Condensate Drains Height	2-3/16	55
F	Liquid Line Height	21-7/16	545

Outdoor Unit Dimension



Installation Instruction



Meets all special requirements shown in Installation Clearance Requirements above.

- Multi-position installation: horizontal(left or right), vertical(up or down)
- Aluminum Coil
- R454B refrigerant sensor
- Easy Maintenance
- Multiple control options available:
 - Two way communication wired controller with built-in WiFi:120N(X6W)
 - Third-Party 24V Thermostat