



Location: _____
 Engineer: _____
 Submitted to: _____
 Submitted by: _____
 Reference: _____

Model Number: AUO19-60N2-M3H / AUH3-60N2-CM3E

Approval: _____
 Date: _____
 Construction: _____
 Unit #: _____
 Drawing #: _____



| INDOOR SPECIFICATION | | |
|---------------------------------------|--------------------------|----------------------|
| ESP(inWG) | 0~0.8 | |
| Indoor Air Flow (Turbo/H/M/L/S) (CFM) | 1801/1648/1501/1236/1236 | |
| Indoor Noise Level (T/H/M/L/S) (dBA) | 60/57/55/37/37 | |
| Dimension (W×D×H) | inch | 21-1/2 x 21-1/2 x 56 |
| | mm | 546 x 546 x 1421 |
| Package (W×D×H) | inch | 59-7/8 x 25 x 31-1/8 |
| | mm | 1520 x 635 x 790 |
| Net/Gross Weight | lbs | 188/238 |
| | kg | 85.3/108.1 |

| OUTDOOR SPECIFICATION | | |
|------------------------------|-------------|--------------------------|
| Compressor Type | TWIN-ROTARY | |
| Refrigerant | R454B | |
| Factory Charge | 1300ml | |
| Refrigerant Oil | VG75 | |
| Outdoor Air Flow (Max) (CFM) | 2648.7 | |
| Outdoor Noise Level (dBA) | 64.5 | |
| Dimension (W×D×H) | inch | 37-1/2 x 16-3/8 x 52-1/2 |
| | mm | 952 x 415 x 1333 |
| Package (W×D×H) | inch | 43-1/8 x 19-1/2x 58-1/4 |
| | mm | 1095 x 495 x 1480 |
| Net/Gross Weight | lbs | 243/275 |
| | kg | 110.2/124.8 |

| EFFICIENCY | | | |
|------------|------|---------|-----|
| Cooling | | Heating | |
| SEER2 | 17.5 | HSPF2-4 | 9.5 |
| EER2 | 12.0 | COP | 3.4 |

| PERFORMANCE of Cooling | |
|--------------------------|--------------------------|
| Cooling (Btu/hr) | |
| Rated Capacity | 54000 |
| Min/Max Capacity | 11400~60000 |
| Moisture Removal | 6.02 |
| Standard Operating Range | -22°F~122°F (-30°C~50°C) |

Rated Cooling Conditions: Indoor: 80°F DB/67°F WB
 Outdoor: 95°F DB/75°F WB

| PERFORMANCE of Heating | |
|------------------------------|--------------------------|
| Heating (Btu/hr) | |
| 1. @ 47°F Rated (Min/Max) | 55000(8600~60000) |
| 2. @ 17°F Rated | 35000 |
| 3. @ 5°F Max: Capacity / COP | 54000/1.9 |
| Standard Operating Range | -22°F ~75°F (-30°C~24°C) |

1. Rated Heating Conditions: Indoor: 70°F DB/60°F WB
 Outdoor: 47°F DB/43°F WB

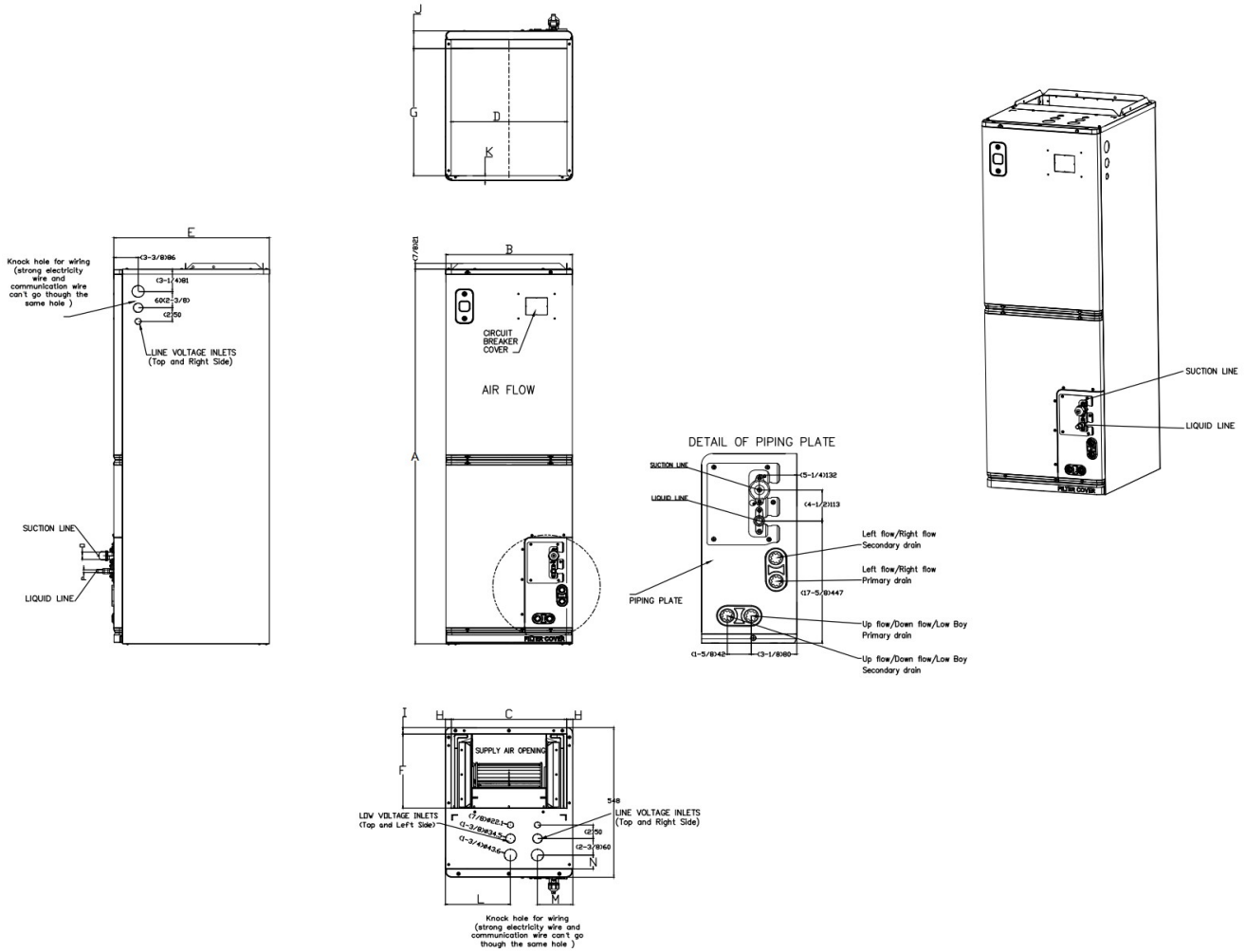
2. Rated Heating Conditions: Indoor: 70°F DB/60°F WB
 Outdoor: 17°F DB/15°F WB

3. Heating Conditions, Compressor Operating at Max. Frequency Indoor: 70°F DB/60°F WB
 Outdoor: 5°F DB/5°F WB

| ELECTRICAL | | |
|----------------------------------|--|--|
| Indoor Power Supply | 115/208/230V,60Hz,1Ph | |
| Indoor MCA 115V/(208/230V) | 14.5/11.0 | |
| Indoor MOP | 15 | |
| Outdoor Power Supply | 208/230V,60Hz,1Ph | |
| Outdoor MCA | 40 | |
| Outdoor MOP | 40 | |
| Communication Wiring | AWG 20-2 | |
| Compressor RLA | 31 | |
| Outdoor Fan Motor RLA | 1.2 | |
| Outdoor Fan Motor W | 85 | |
| Indoor Fan Motor RLA | 8 | |
| Indoor Fan Motor W | 1000 | |
| System Power Input @ Cooling (W) | 4851(1540 ~ 6720) | |
| System Power Input @ Heating (W) | 5015(775 ~5720) | |
| MCA: Min. circuit amps (A) | MOCP: Max. over current protection (A) | |
| RLA: Rated load amps (A) | W: Fan motor rated output (W) | |

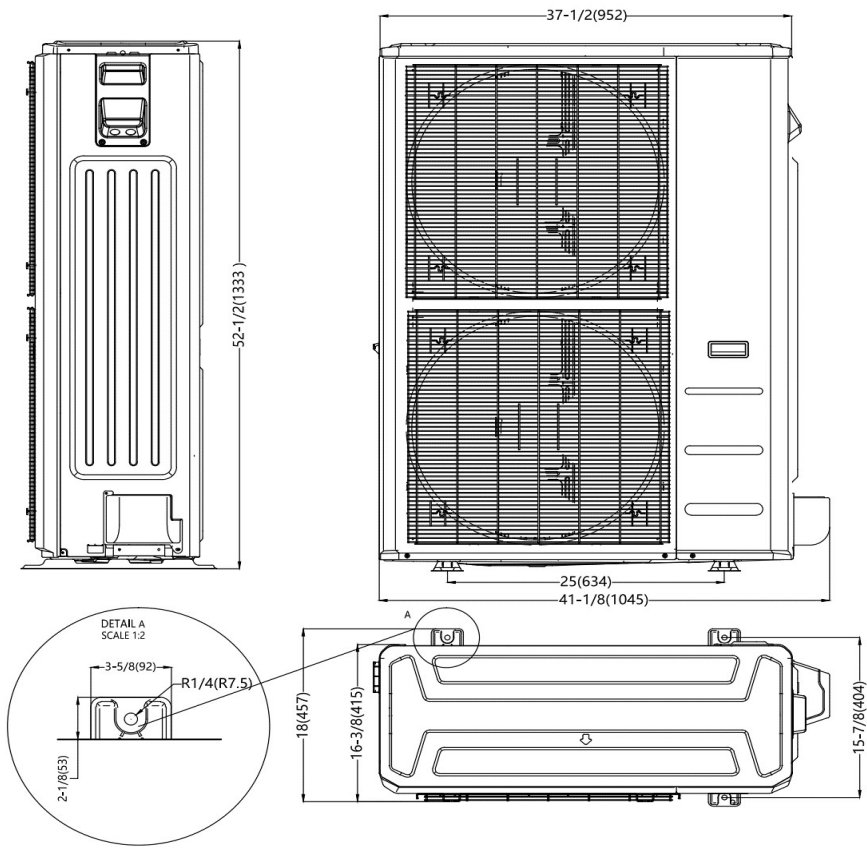
| PIPING | | |
|----------------------------------|------------------|--|
| Liquid Size | 3/8in (9.52mm) | |
| Gas Size | 3/4in (19mm) | |
| Drain Size | 5/8in (15.88mm) | |
| Max. Piping Length | 246ft (75m) | |
| Max. Height Difference | 98.4ft (30m) | |
| Max. Pre-charged Length | 24.6ft (7.5m) | |
| Refrigerant Pre-charged Amount | 183.42oz (5200g) | |
| Additional Charge of Refrigerant | 0.7oz/ft (65g/m) | |
| Connection Method | Flared | |

Indoor Unit Dimension

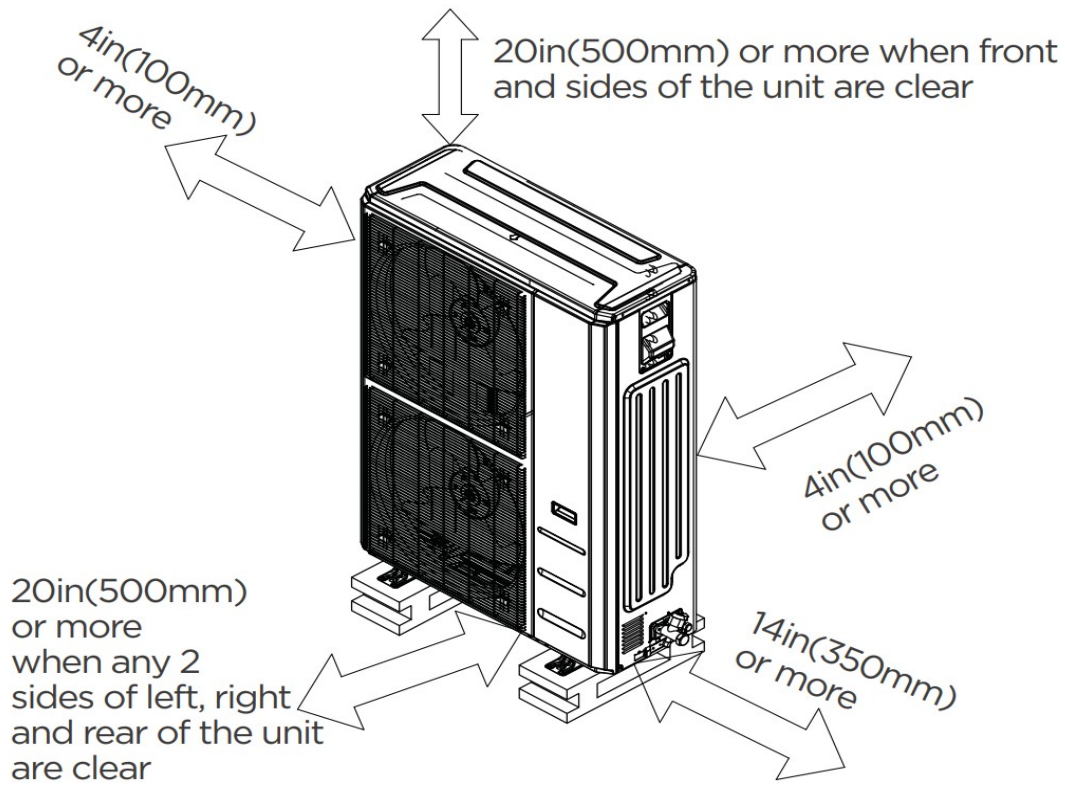


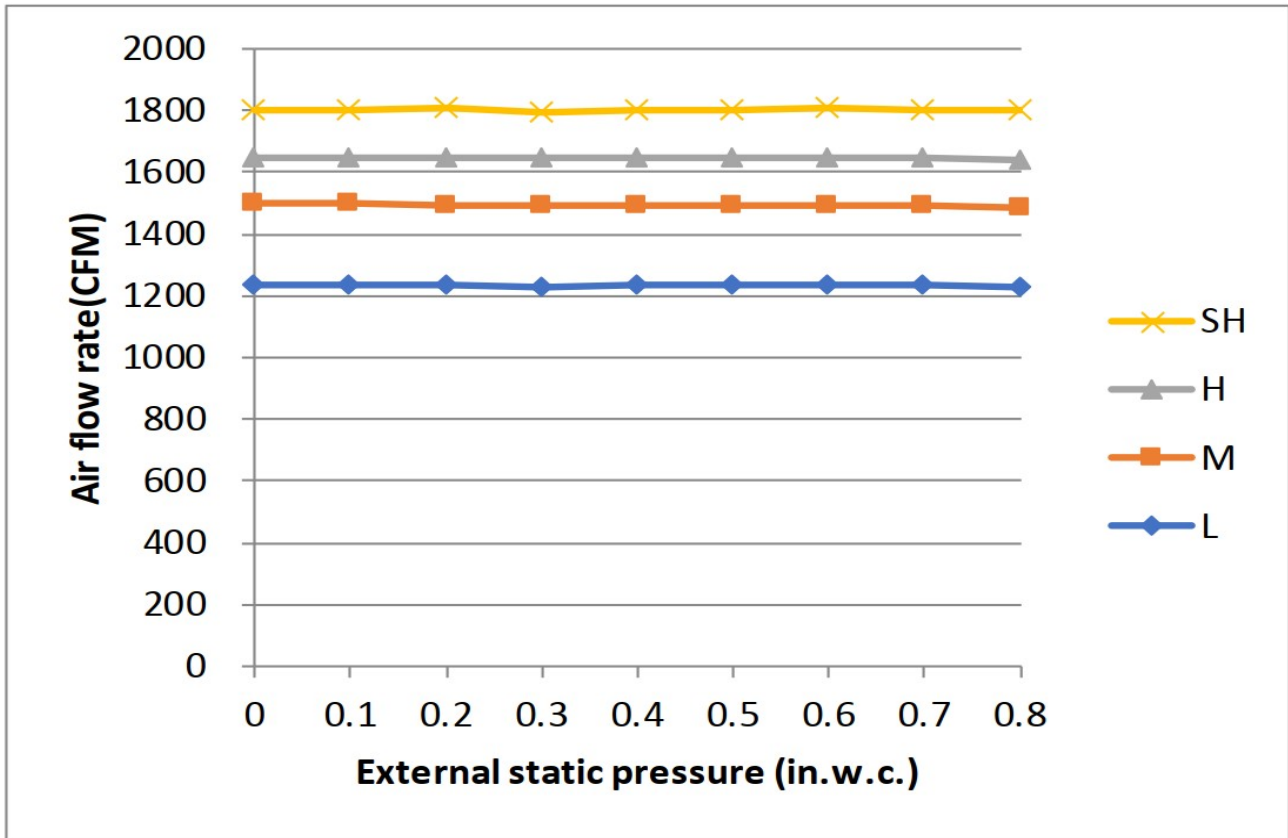
| Dimensions | | Model(Btu/h) | 18K/24K | | 30K/36K | | 48K/54K | |
|------------|--|--------------|---------|------|---------|------|---------|------|
| | | | inch | mm | inch | mm | inch | mm |
| A | Model Height | | 49-3/4 | 1263 | 54 | 1371 | 56 | 1421 |
| B | Model Width | | 14-1/2 | 368 | 17-1/2 | 445 | 21-1/2 | 546 |
| C | Supply Air Opening Width | | 12-7/8 | 328 | 16 | 405 | 19-7/8 | 506 |
| D | Return Air Opening Width | | 13 | 331 | 16 | 407 | 20 | 509 |
| E | Model Depth | | 21-1/2 | 546 | 21-1/2 | 546 | 21-1/2 | 546 |
| F | Supply Air Opening Depth | | 10-5/8 | 271 | 10-5/8 | 271 | 10-5/8 | 271 |
| G | Return Air Opening Depth | | 18-1/4 | 465 | 18-1/4 | 465 | 18-1/4 | 465 |
| H | Supply Air Opening Clearance | | 7/8 | 22 | 7/8 | 22 | 7/8 | 22 |
| I | Supply Air Opening Clearance | | 1 | 24 | 1 | 24 | 1 | 24 |
| J | Return Air Opening Front Clearance | | 2-1/2 | 65 | 2-1/2 | 65 | 2-1/2 | 65 |
| K | Return Air Opening Back Clearance | | 3/4 | 18 | 3/4 | 18 | 3/4 | 18 |
| L | Top cover knock hole | | / | / | 9 | 229 | 10-7/8 | 275 |
| M | Top cover knock hole | | 4-1/2 | 113 | 4-7/8 | 124 | 5-1/8 | 131 |
| N | Top cover knock hole | | 2 | 51 | 2 | 51 | 1-5/8 | 41 |
| O | Refrigerant piping flareconnection(gas) | | 3/4 | 19 | 3/4 | 19 | 3/4 | 19 |
| P | Refrigerant piping flareconnection(liquid) | | 3/8 | 9 | 3/8 | 9 | 3/8 | 9 |

Outdoor Unit Dimension



Installation Instruction





Features

- Multi-position installation: horizontal(left or right), vertical(up or down)
- 115/230V voltage compatible for IDU
- Aluminum Coil
- Constantly Air Flow system up to 1.0 In.W.G
- Optional Auxiliary heat kit up to 25kW
- Easy Maintenance
- Multiple controller options available:
 - Optional two way communication wired controller, programmable:120N(X6)
 - Optional two way communication wired controller, programmable, with built-in WiFi, :120N(X6W)
 - Standard Wireless remote controller
 - Can connect with Third-Party 24V Thermostat
- Adapted to RS485 and 24V communication controllers
- High efficiency up to 19 SEER2, 12.5 EER2, 10.8 HSPF2
- 100% heat output at -13F*
- Chassis heater and crankcase heater pre-bulit as standard

* For AUH3-36N2-BM3E pairing with AUO19-36N2-M3H-S, rated cooling capacity/heating capacity at -13F=100%