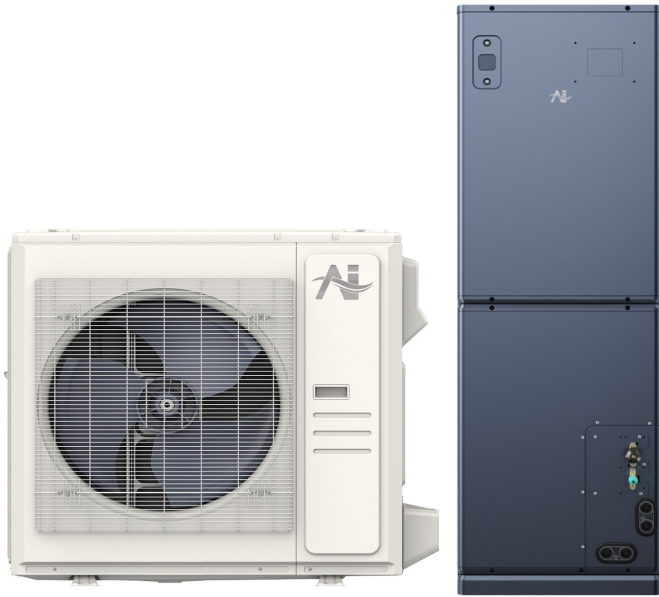




Location: \_\_\_\_\_  
 Engineer: \_\_\_\_\_  
 Submitted to: \_\_\_\_\_  
 Submitted by: \_\_\_\_\_  
 Reference: \_\_\_\_\_

Model Number: AUO19-36N2-M3H-S / AUH3-36N2-BM3E

Approval: \_\_\_\_\_  
 Date: \_\_\_\_\_  
 Construction: \_\_\_\_\_  
 Unit #: \_\_\_\_\_  
 Drawing #: \_\_\_\_\_



INDOOR SPECIFICATION		
ESP(inWG)	0~1.0	
Indoor Air Flow (Turbo/H/M/L/S) (CFM)	1236/1148/1060/971/971	
Indoor Noise Level (T/H/M/L/S) (dBA)	48/47/45/33/33	
Dimension (W×D×H)	inch	21-1/2 x 17-1/2 x 54
	mm	546 x 445 x 1371
Package (W×D×H)	inch	57-1/8 x 20-1/2 x 31-1/8
	mm	1450 x 520 x 790
Net/Gross Weight	lbs	149/182
	kg	67.7/82.6

OUTDOOR SPECIFICATION		
Compressor Type	TWIN-ROTARY	
Refrigerant	R454B	
Factory Charge	1460ml	
Refrigerant Oil	VG75	
Outdoor Air Flow (Max) (CFM)	3001.9	
Outdoor Noise Level (dBA)	63.0	
Dimension (W×D×H)	inch	38-5/8 x 16-3/8 x 38-3/8
	mm	980 x 415 x 975
Package (W×D×H)	inch	45-1/8 x 19-5/8 x 42-1/2
	mm	1145 x 500 x 1080
Net/Gross Weight	lbs	204/235
	kg	92.6/106.7

EFFICIENCY			
Cooling		Heating	
SEER2	18.0	HSPF2-4	10.0
EER2	12.0	COP	3.5

PERFORMANCE of Cooling	
Cooling (Btu/hr)	
Rated Capacity	36000
Min/Max Capacity	12100~43000
Moisture Removal	3.41
Standard Operating Range	-22°F~-122°F (-30°C~50°C)

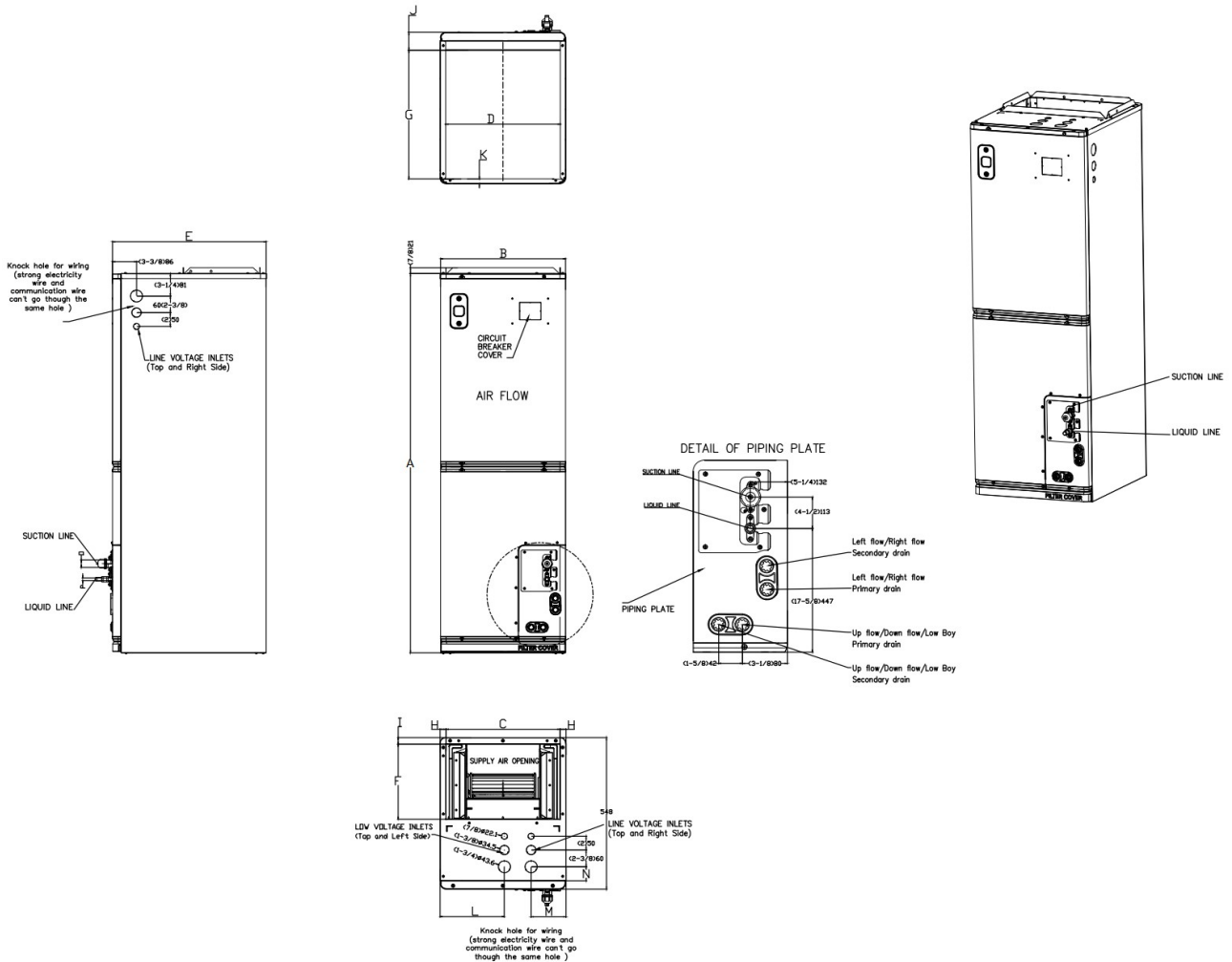
Rated Cooling Conditions: Indoor: 80°F DB/67°F WB  
 Outdoor: 95°F DB/75°F WB

PERFORMANCE of Heating	
Heating (Btu/hr)	
1. @ 47°F Rated (Min/Max)	37000(11400~47000)
2. @ 17°F Rated	31000
3. @ 5°F Max: Capacity / COP	37400/1.9
Standard Operating Range	-22°F ~75°F (-30°C~24°C)

1. Rated Heating Conditions: Indoor: 70°F DB/60°F WB  
 Outdoor: 47°F DB/43°F WB  
 2. Rated Heating Conditions: Indoor: 70°F DB/60°F WB  
 Outdoor: 17°F DB/15°F WB  
 3. Heating Conditions, Compressor Operating at Max. Frequency Indoor: 70°F DB/60°F WB  
 Outdoor: 5°F DB/5°F WB

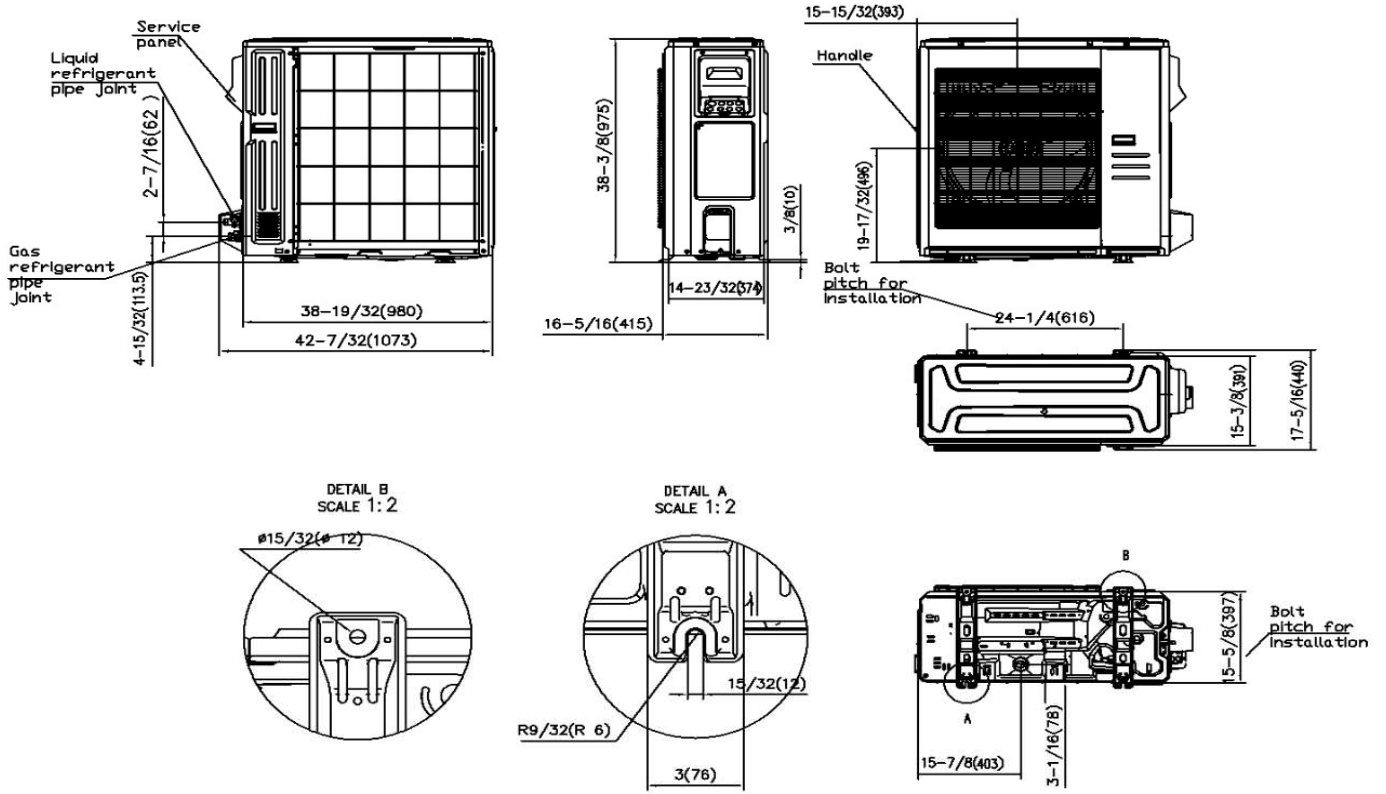
ELECTRICAL		
Indoor Power Supply	115/208/230V,60Hz,1Ph	
Indoor MCA 115V/(208/230V)	8.0/6.0	
Indoor MOP	15	
Outdoor Power Supply	208/230V,60Hz,1Ph	
Outdoor MCA	29	
Outdoor MOP	30	
Communication Wiring	AWG 20-2	
Compressor RLA	20.5	
Outdoor Fan Motor RLA	2.4	
Outdoor Fan Motor W	250	
Indoor Fan Motor RLA	4.5	
Indoor Fan Motor W	600	
System Power Input @ Cooling (W)	3000(910 ~ 4370)	
System Power Input @ Heating (W)	3098(755 ~4210)	
MCA: Min. circuit amps (A)	MOCP: Max. over current protection (A)	
RLA: Rated load amps (A)	W: Fan motor rated output (W)	

PIPING		
Liquid Size	3/8in (9.52mm)	
Gas Size	3/4in (19mm)	
Drain Size	5/8in (15.88mm)	
Max. Piping Length	246ft (75m)	
Max. Height Difference	98.4ft (30m)	
Max. Pre-charged Length	24.6ft (7.5m)	
Refrigerant Pre-charged Amount	126.99oz (3600g)	
Additional Charge of Refrigerant	0.7oz/ft (65g/m)	
Connection Method	Flared	

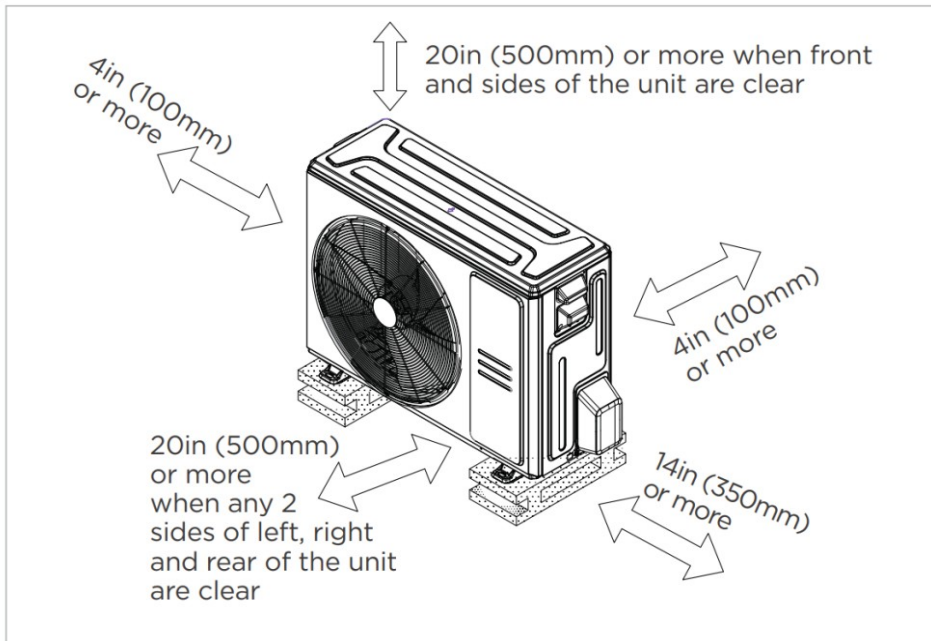


Dimensions		Model(Btu/h)		18K/24K		30K/36K		48K/54K	
		inch	mm	inch	mm	inch	mm		
A	Model Height	49-3/4	1263	54	1371	56	1421		
B	Model Width	14-1/2	368	17-1/2	445	21-1/2	546		
C	Supply Air Opening Width	12-7/8	328	16	405	19-7/8	506		
D	Return Air Opening Width	13	331	16	407	20	509		
E	Model Depth	21-1/2	546	21-1/2	546	21-1/2	546		
F	Supply Air Opening Depth	10-5/8	271	10-5/8	271	10-5/8	271		
G	Return Air Opening Depth	18-1/4	465	18-1/4	465	18-1/4	465		
H	Supply Air Opening Clearance	7/8	22	7/8	22	7/8	22		
I	Supply Air Opening Clearance	1	24	1	24	1	24		
J	Return Air Opening Front Clearance	2-1/2	65	2-1/2	65	2-1/2	65		
K	Return Air Opening Back Clearance	3/4	18	3/4	18	3/4	18		
L	Top cover knock hole	/	/	9	229	10-7/8	275		
M	Top cover knock hole	4-1/2	113	4-7/8	124	5-1/8	131		
N	Top cover knock hole	2	51	2	51	1-5/8	41		
O	Refrigerant piping flareconnection(gas)	3/4	19	3/4	19	3/4	19		
P	Refrigerant piping flareconnection(liquid)	3/8	9	3/8	9	3/8	9		

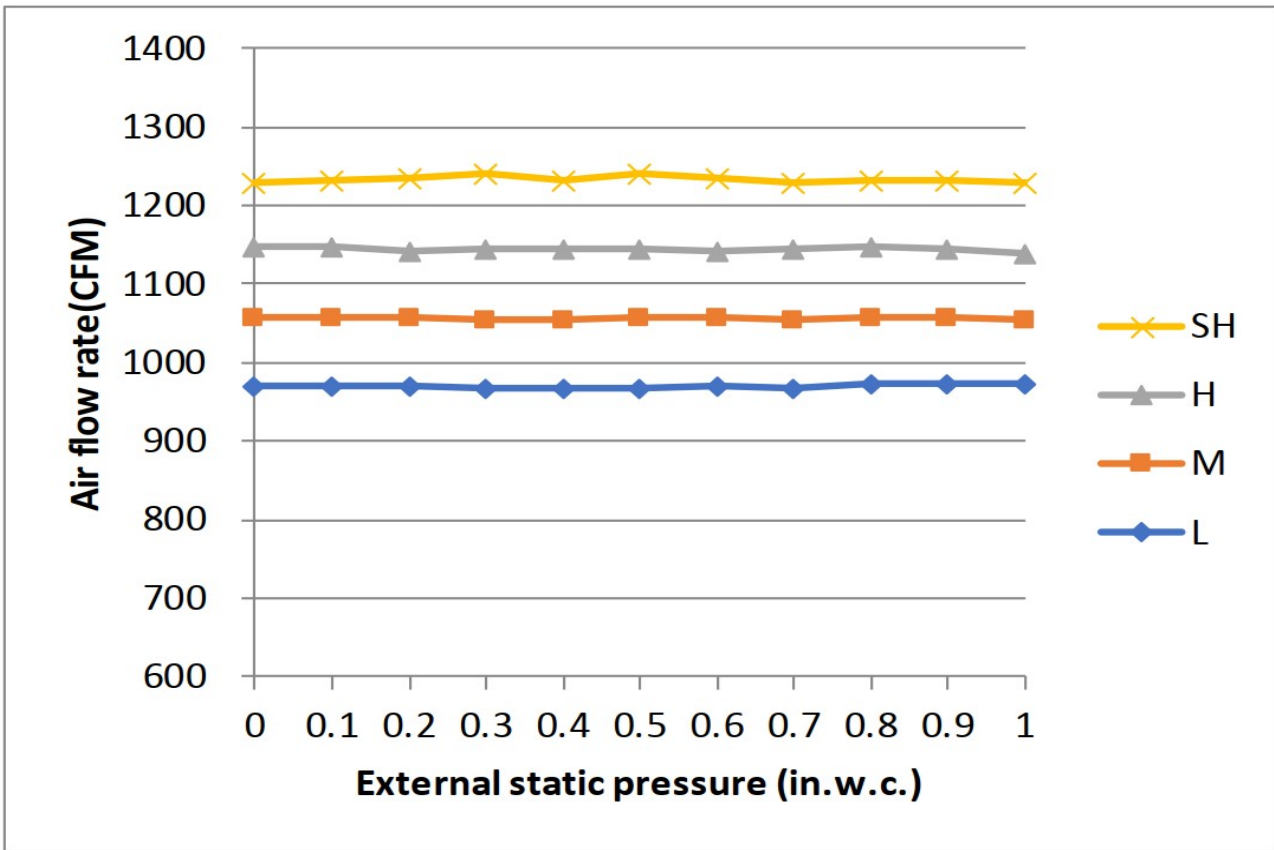
## Outdoor Unit Dimension



## Installation Instruction



- Meets all special requirements shown in Installation Clearance Requirements above.



Features

- Multi-position installation: horizontal(left or right), vertical( up or down)
- 115/230V voltage compatible for IDU
- Aluminum Coil
- Constantly Air Flow system up to 1.0 In.W.G
- Optional Auxiliary heat kit up to 25kW
- Easy Maintenance
- Multiple controller options available:
  - Optional two way communication wired controller, programmable:120N(X6)
  - Optional two way communication wired controller, programmable, with built-in WiFi, :120N(X6W)
  - Standard Wireless remote controller
  - Can connect with Third-Party 24V Thermostat
- Adapted to RS485 and 24V communication controllers
- High efficiency up to 19 SEER2, 12.5 EER2, 10.8 HSPF2
- 100% heat output at -13F\*
- Chassis heater and crankcase heater pre-bulit as standard

\* For AUH3-36N2-BM3E pairing with AUO19-36N2-M3H-S, rated cooling capacity/heating capacity at -13F=100%