

SUBMITTAL DATA SHEET



Series Name: **INNOVA 24V Mega Heat with AHU**
 Model Number: **AUO18-36N1-M3H / AUH2-36N1-CM3E**

Heat Pump System	
Location: _____	Approval: _____
Engineer: _____	Date: _____
Submitted to: _____	Construction: _____
Submitted by: _____	Unit #: _____
Reference: _____	Drawing #: _____



INDOOR SPECIFICATION		
Indoor Air Flow (Turbo/H/M/L) (CFM)		1188/1082/971/865
Indoor Noise Level (H/M/L) (dBA)		49/44/42
Dimension (W×D×H)	inch	21 x 21 x 49
	mm	534 x 534 x 1245
Package (W×D×H)	inch	26-5/8 x 24-3/8 x 52-1/2
	mm	675 x 620 x 1335
Net/Gross Weight	lbs	129/156
	kg	58.6/70.6

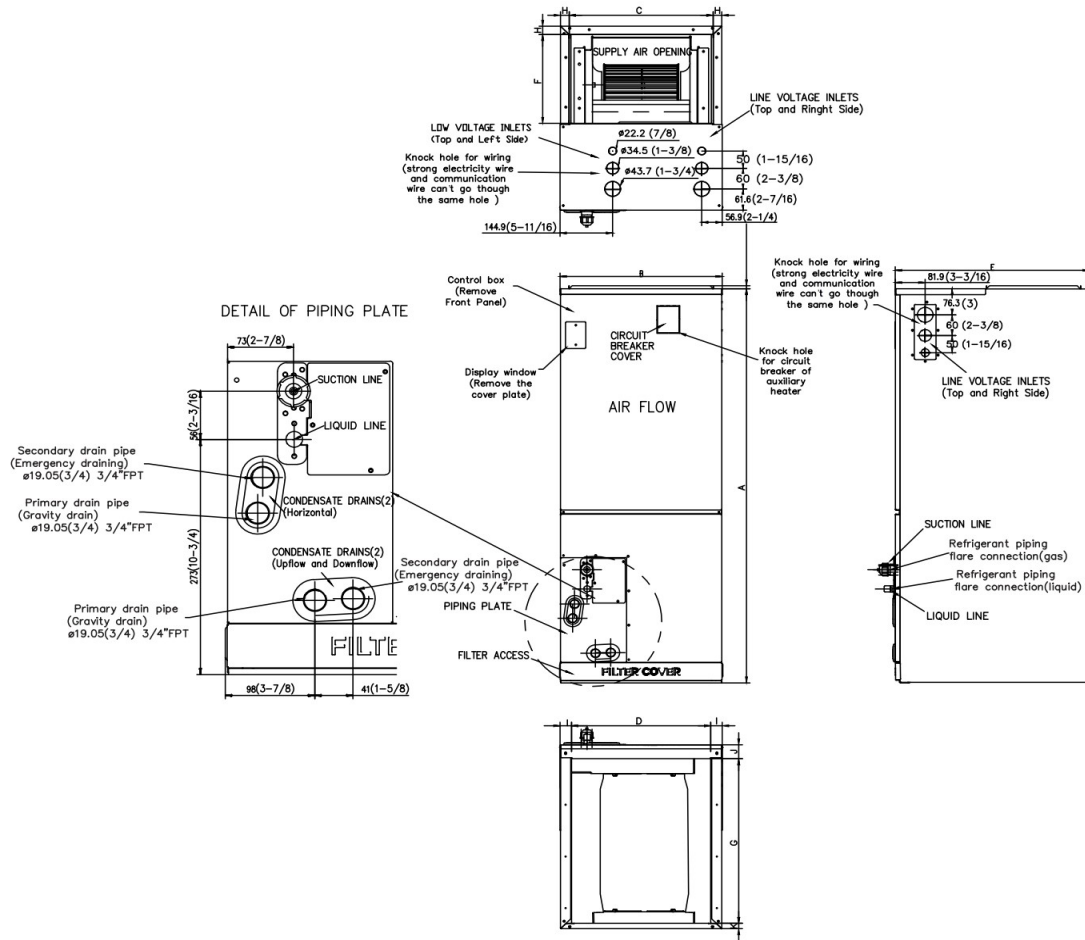
OUTDOOR SPECIFICATION		
Compressor Type		ROTARY
Refrigerant		R410A
Factory Charge Oil		1460±15ml
Refrigerant Oil		VG74
Outdoor Air Flow (Max) (CFM)		3035
Outdoor Noise Level (dBA)		65
Dimension (W×D×H)	inch	38-5/8 x 14-2/3 x 38-3/8
	mm	980 x 375 x 975
Package (W×D×H)	inch	45-1/8 x 19-5/8 x 42-1/2
	mm	1145 x 500 x 1080
Net/Gross Weight	lbs	204/235
	kg	92.4/106.4

EFFICIENCY			
Cooling		Heating	
SEER2	16.3	HSPF2-4	9.5
EER2	11.7	COP	3.4
PERFORMANCE of Cooling			
Cooling (Btu/hr)			
Rated (Min/Max)		35000	
Sebsible @ AHRI		14000~38000	
Moisture Removal		3.65 L/H (7.7pint/H)	
Standard Operating Range		5°F~122°F (-15°C~50°C)	
Rated Cooling Conditions:		Indoor: 80°F DB/67°F WB Outdoor: 95°F DB/75°F WB	
PERFORMANCE of Heating			
Heating (Btu/hr)			
1. @ 47°F Rated (Min/Max)		39000(11000~48000)	
2. @ 17°F Rated		31800	
3. @ 5°F Max: Capacity / COP		38000 / 1.8	
Standard Operating Range		-22°F~75°F (-30°C~24°C)	
1. Rated Heating Conditions:		Indoor: 70°F DB/60°F WB Outdoor: 47°F DB/43°F WB	
2. Rated Heating Conditions:		Indoor: 70°F DB/60°F WB Outdoor: 17°F DB/15°F WB	
3. Heating Conditions, Compressor Operating at Max. Frequency		Indoor: 70°F DB/60°F WB Outdoor: 5°F DB/5°F WB	

ELECTRICAL	
Power Supply	208/230V, 1Ph, 60Hz
Outdoor/Indoor MCA	30/5
Connection Wiring	AWG 14-2
Outdoor/Indoor MOCP	30/15
Compressor RLA	21.5
Outdoor Fan Motor RLA	2.5
Outdoor Fan Motor W	250
Indoor Fan Motor RLA	4
Indoor Fan Motor W	/
System Power Input @ Cooling (W)	2990(790~4640)
System Power Input @ Heating (W)	3360(730~4540)
MCA: Min. circuit amps (A)	MOCP: Max. over current protection (A)
RLA: Rated load amps (A)	W: Fan motor rated output (W)

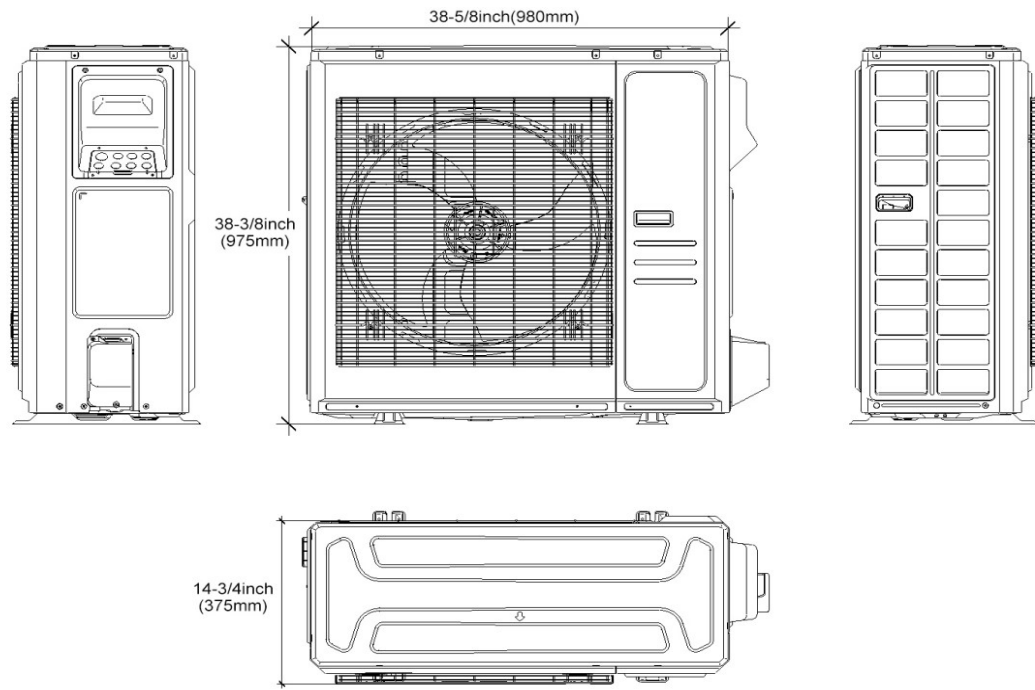
PIPING	
Liquid Size	3/8in (9.52mm)
Gas Size	3/4in (19mm)
Drain Size	5/8in (15.88mm)
Max. Piping Length	213.25ft (65m)
Max. Height Difference	98.42ft (30m)
Max. Pre-charged Length	25ft (7.5m)
Refrigerant Pre-charged Amount	141.1oz (4000g)
Additional Charge of Refrigerant	0.69oz/ft (65g/m)
Connection Method	Flared

Indoor Unit Dimension



Dimensions		Model	18k/24k		30k/36k		48k/60k	
			inch	mm	inch	mm	inch	mm
A	Model Height		45	1143	49	1245	53	1346
B	Model Width		17-1/2	445	21	534	24-1/2	622
C	Supply Air Opening Width		15-5/8	397	19-1/8	486	22-5/8	575
D	Return Air Opening Width		15-1/8	384	18-5/8	473	22-1/8	562
E	Model Depth		21	534	21	534	21	534
F	Supply Air Opening Depth		10-1/4	260	10-1/4	260	10-1/4	260
G	Return Air Opening Depth		18-3/4	476	18-3/4	476	18-3/4	476
H	Supply Air Opening Clearance		15/16	24	15/16	24	15/16	24
I	Return Air Opening Side Clearance		1-1/4	32	1-1/4	32	1-1/8	28
J	Return Air Opening Front Clearance		1-1/2	38	1-5/8	41	1-5/8	41
K	Return Air Opening Back Clearance		5/8	16	5/8	16	3/4	19

Outdoor Unit Dimension



Fan performance

