

# SUBMITTAL DATA SHEET



Series Name: **INNOVA 24V Regular with AHU**

Model Number: **AUO17-18N1-M3 / AUH2-18N1-BM3E**

## Heat Pump System

Location: \_\_\_\_\_  
 Engineer: \_\_\_\_\_  
 Submitted to: \_\_\_\_\_  
 Submitted by: \_\_\_\_\_  
 Reference: \_\_\_\_\_

Approval: \_\_\_\_\_  
 Date: \_\_\_\_\_  
 Construction: \_\_\_\_\_  
 Unit #: \_\_\_\_\_  
 Drawing #: \_\_\_\_\_



| INDOOR SPECIFICATION                |      |                          |
|-------------------------------------|------|--------------------------|
| Indoor Air Flow (Turbo/H/M/L) (CFM) |      | 618/576/529/488          |
| Indoor Noise Level (H/M/L) (dBA)    |      | 34/32/30                 |
| Dimension (W×D×H)                   | inch | 21 x 17-1/2 x 45         |
|                                     | mm   | 534 x 445 x 1143         |
| Package (W×D×H)                     | inch | 26-5/8 x 20-7/8 x 48-5/8 |
|                                     | mm   | 675 x 530 x 1235         |
| Net/Gross Weight                    | lbs  | 106/129                  |
|                                     | kg   | 48/58.7                  |

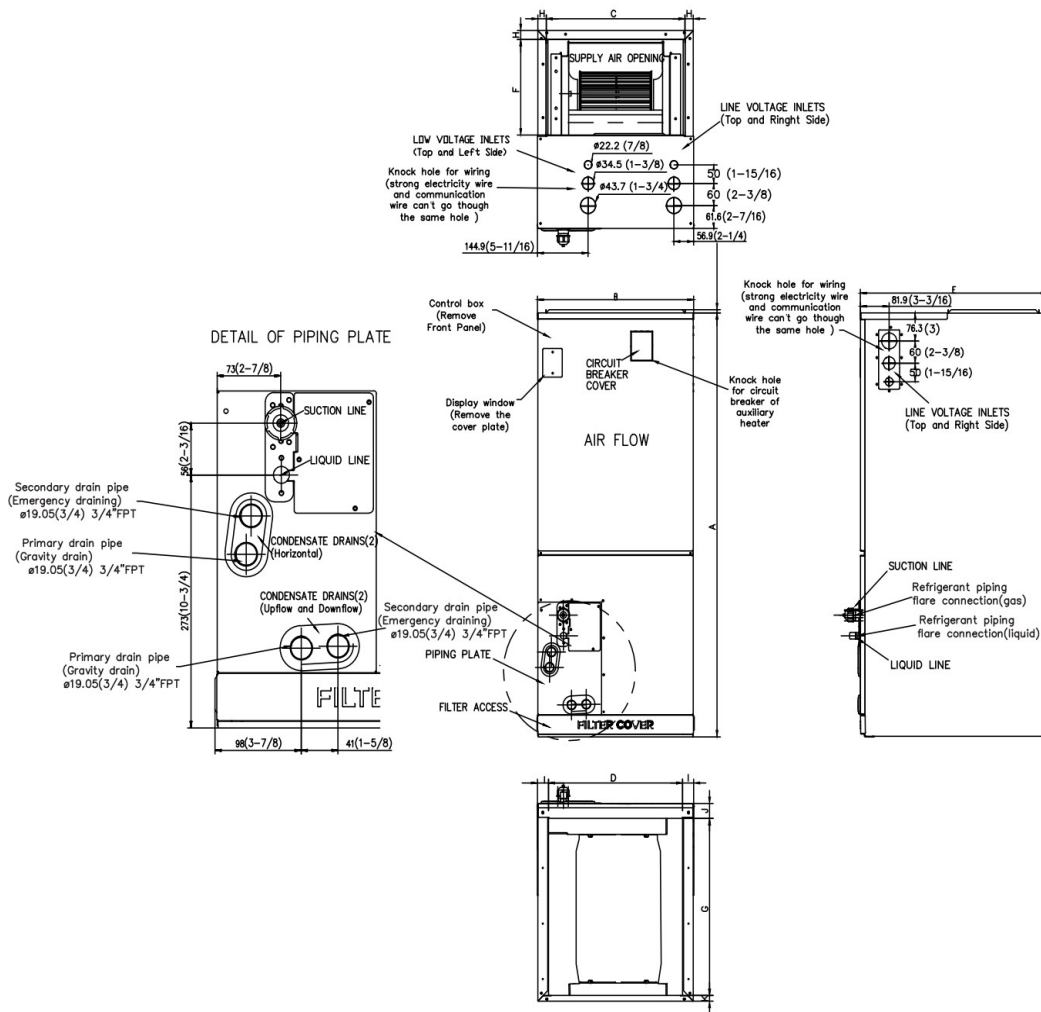
| OUTDOOR SPECIFICATION        |      |                      |
|------------------------------|------|----------------------|
| Compressor Type              |      | ROTARY               |
| Refrigerant                  |      | R410A                |
| Factory Charge Oil           |      | 440ml                |
| Refrigerant Oil              |      | VG74                 |
| Outdoor Air Flow (Max) (CFM) |      | 1450                 |
| Outdoor Noise Level (dBA)    |      | 52                   |
| Dimension (W×D×H)            | inch | 31-3/4 x 13 x 21-3/4 |
|                              | mm   | 805 x 330 x 554      |
| Package (W×D×H)              | inch | 36 x 14-5/8 x 24-1/4 |
|                              | mm   | 915 x 370 x 615      |
| Net/Gross Weight             | lbs  | 76/81                |
|                              | kg   | 34.4/36.9            |

| EFFICIENCY  |      |   |     |
|---|------|---|-----|
| Cooling   |      | Heating   |     |
| SEER2   | 17.0 | HSPF2-4   | 8.8 |
| EER2  | 10.9 | COP   | 3.5 |
| PERFORMANCE of Cooling  |      |   |     |
| Cooling (Btu/hr)  |      |   |     |
| Rated Capacity  |      | 18000   |     |
| Min/Max Capacity  |      | 5350~18700  |     |
| Moisture Removal  |      | 1.86 L/H (3.9 pint/H)                               |     |
| Standard Operating Range                                      |      | 5°F~122°F (-15°C~50°C)                              |     |
| Rated Cooling Conditions:                                     |      | Indoor: 80°F DB/67°F WB<br>Outdoor: 95°F DB/75°F WB |     |
| PERFORMANCE of Heating  |      |   |     |
| Heating (Btu/hr)  |      |   |     |
| 1. @ 47°F Rated (Min/Max)                                     |      | 18000(5600~18700)                                   |     |
| 2. @ 17°F Rated   |      | 12000   |     |
| 3. @ 5°F Max: Capacity / COP                                  |      | 11000 / 2.00  |     |
| Standard Operating Range                                      |      | 5°F~75°F (-15°C~24°C)                               |     |
| 1. Rated Heating Conditions:                                  |      | Indoor: 70°F DB/60°F WB<br>Outdoor: 47°F DB/43°F WB |     |
| 2. Rated Heating Conditions:                                  |      | Indoor: 70°F DB/60°F WB<br>Outdoor: 17°F DB/15°F WB |     |
| 3. Heating Conditions, Compressor Operating at Max. Frequency |      | Indoor: 70°F DB/60°F WB<br>Outdoor: 5°F DB/5°F WB   |     |

| ELECTRICAL                       |  |
|----------------------------------|--|
| Power Supply                     | 230V,1Ph,60Hz                          |
| Outdoor/Indoor MCA               | 16/2.5                                 |
| Connection Wiring                | AWG 14-4                               |
| Outdoor/Indoor MOCP              | 20/15                                  |
| Compressor RLA                   | 9                                      |
| Outdoor Fan Motor RLA            | 1                                      |
| Outdoor Fan Motor W              | 34                                     |
| Indoor Fan Motor RLA             | 2.0                                    |
| Indoor Fan Motor W               | /                                      |
| System Power Input @ Cooling (W) | 1660(220~1800)                         |
| System Power Input @ Heating (W) | 1530(340~1560)                         |
| MCA: Min. circuit amps (A)       | MOCP: Max. over current protection (A) |
| RLA: Rated load amps (A)         | W: Fan motor rated output (W)          |

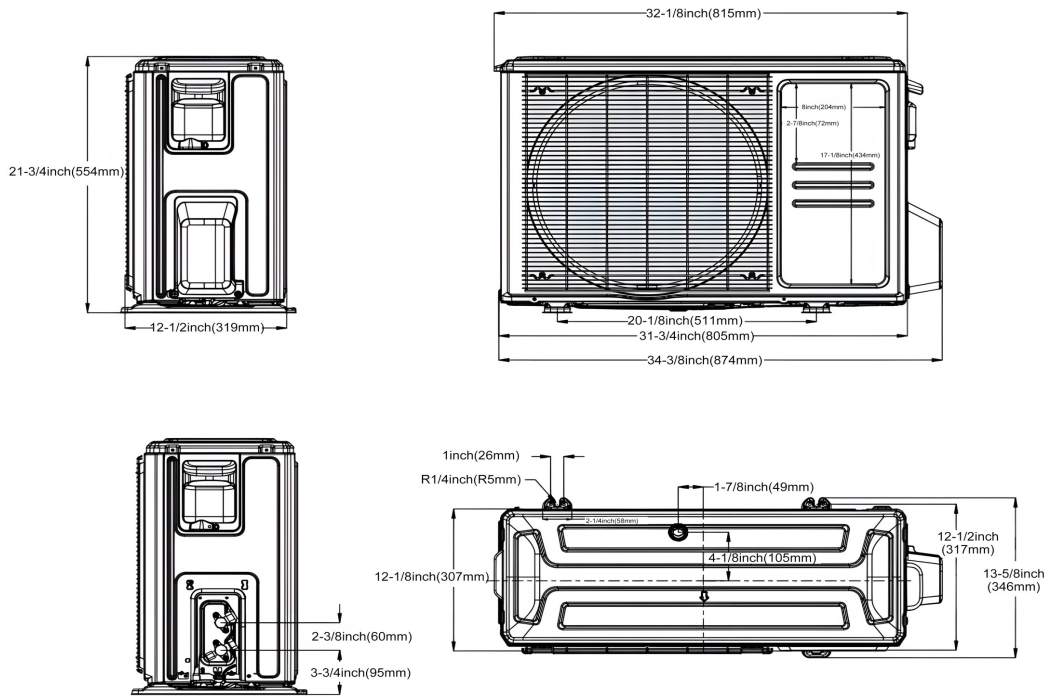
| PIPING                           |  |
|----------------------------------|--|
| Liquid Size                      | 3/8in (9.52mm)                           |
| Gas Size                         | 3/4in (19mm) ODU Adaptor from 5/8 to 3/4 |
| Drain Size                       | 5/8in (15.88mm)                          |
| Max. Piping Length               | 98.4ft (30m)                             |
| Max. Height Difference           | 65.6ft (20m)                             |
| Max. Pre-charged Length          | 25ft (7.5m)                              |
| Refrigerant Pre-charged Amount   | 56.44oz (1600g)                          |
| Additional Charge of Refrigerant | 0.69oz/ft (65g/m)                        |
| Connection Method                | Flared                                   |

## Indoor Unit Dimension



| Dimensions | Model                              | 18k/24k |      | 30k/36k |      | 48k/60k |      |
|------------|------------------------------------|---------|------|---------|------|---------|------|
|            |                                    | inch    | mm   | inch    | mm   | inch    | mm   |
| A          | Model Height                       | 45      | 1143 | 49      | 1245 | 53      | 1346 |
| B          | Model Width                        | 17-1/2  | 445  | 21      | 534  | 24-1/2  | 622  |
| C          | Supply Air Opening Width           | 15-5/8  | 397  | 19-1/8  | 486  | 22-5/8  | 575  |
| D          | Return Air Opening Width           | 15-1/8  | 384  | 18-5/8  | 473  | 22-1/8  | 562  |
| E          | Model Depth                        | 21      | 534  | 21      | 534  | 21      | 534  |
| F          | Supply Air Opening Depth           | 10-1/4  | 260  | 10-1/4  | 260  | 10-1/4  | 260  |
| G          | Return Air Opening Depth           | 18-3/4  | 476  | 18-3/4  | 476  | 18-3/4  | 476  |
| H          | Supply Air Opening Clearance       | 15/16   | 24   | 15/16   | 24   | 15/16   | 24   |
| I          | Return Air Opening Side Clearance  | 1-1/4   | 32   | 1-1/4   | 32   | 1-1/8   | 28   |
| J          | Return Air Opening Front Clearance | 1-1/2   | 38   | 1-5/8   | 41   | 1-5/8   | 41   |
| K          | Return Air Opening Back Clearance  | 5/8     | 16   | 5/8     | 16   | 3/4     | 19   |

### Outdoor Unit Dimension



### Fan Performance

