

# SUBMITTAL DATA SHEET

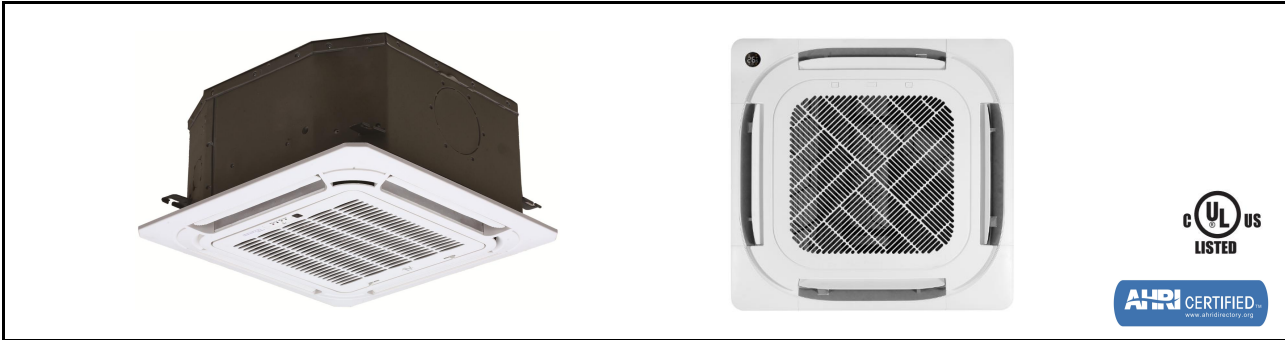


Series Name: **Multi Zone Indoor Unit 4-Way Cassette**

Model Number: **AC-24N1-M1**

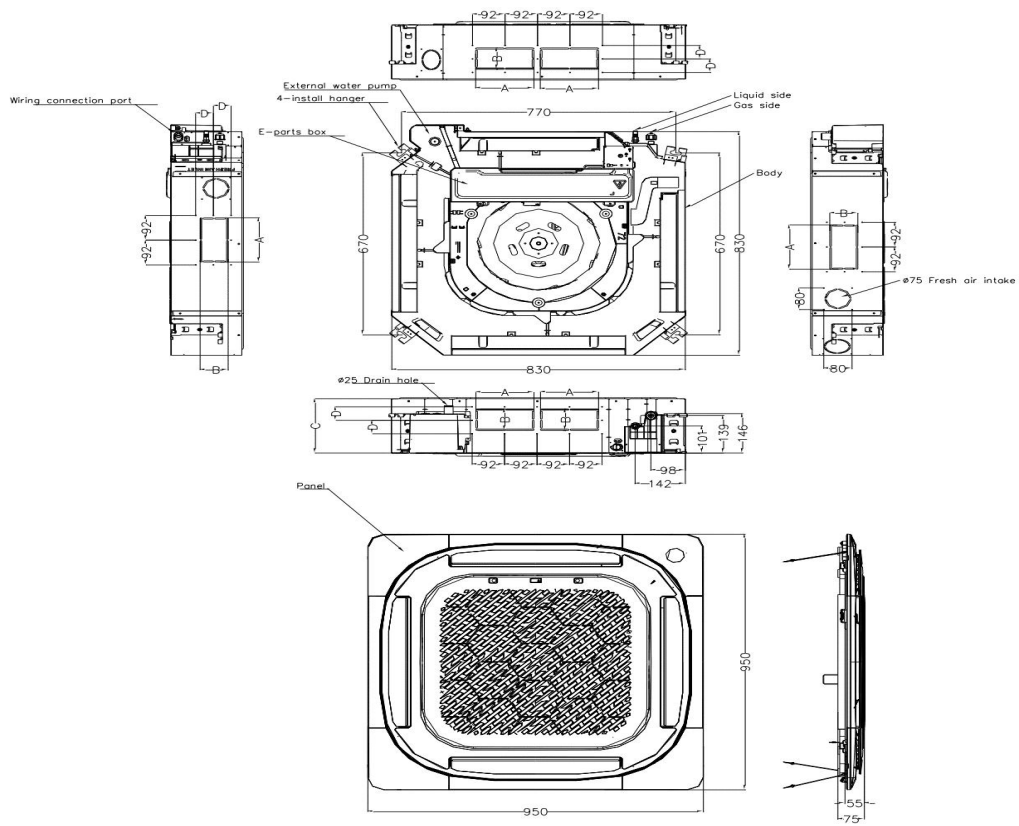
## Heat Pump System

Location: _____	Approval: _____
Engineer: _____	Date: _____
Submitted to: _____	Construction: _____
Submitted by: _____	Unit #: _____
Reference: _____	Drawing #: _____



Item	Unit	Specification
<b>Performance Data</b>		
Cooling Capacity	Btu/h	24000(8000~25000)
Heating Capacity	Btu/h	25000(11800~27000)
Design Pressure	PSIG	550/340
Refrigerant Type	-	R410A
Liquid Side	inch(mm)	3/8in (9.52mm)
Gas Side	inch(mm)	5/8in (15.9mm)
Indoor Operation Range of Cooling	Deg.°F (°C)	60°F~90°F (16°C~32°C)
Indoor Operation Range of Heating	Deg.°F (°C)	32°F~86°F (0°C~30°C)
<b>Electrical</b>		
Normal Operational Voltage	V, Ph, Hz	208/230V,1Ph, 60Hz
Voltage Range	V	187-253
Connection Wiring	-	14*4 AWG
Indoor Fan Motor Model	-	ZKFN-45-8-1
Indoor Fan Motor Input	W	/
Indoor Fan Motor Output	W	45
Indoor Fan Motor RLA	A	1
Indoor Fan Motor Speed(Hi/Mi/Lo)	r/min	680/624/568
<b>Air Flow &amp; Noise Level</b>		
Indoor Air Flow (H/M/L)	CFM	765/706/635
Indoor Noise Level (H/M/L)	dB(A)	48/46/43
Moisture Removal	L/H (pint/H)	2.72L/H (5.74pint/H)
Dimension (W×D×H)	inch	32-5/8 x 32-5/8 x 8-1/8
	mm	830 x 830 x 205
Package (W×D×H)	inch	35-7/8 x 35-7/8 x 9-7/8
	mm	910 x 910 x 250
Net Weight / Gross Weight	lbs	47/55
	kg	21.4/25.1

## Indoor Unit Dimension



Capacity (Btu/h)	Unit	A	B	C	D
24K	mm	165	80	205	50
	inch	6.5	3.15	8.07	1.97
36K	mm	165	100	245	60
	inch	6.5	3.64	9.65	2.36
48K	mm	165	100	287	60
	inch	6.5	3.64	11.30	2.36