

SUBMITTAL DATA SHEET



Series Name: **INNOVA 24V Mega Heat with A Coil**

Model Number: **AUO18-36N1-M3H / AUA-36N1-B24**

Heat Pump System

Location: _____
 Engineer: _____
 Submitted to: _____
 Submitted by: _____
 Reference: _____

Approval: _____
 Date: _____
 Construction: _____
 Unit #: _____
 Drawing #: _____



INDOOR SPECIFICATION		
Indoor Air Flow (H/M/L) (CFM)	To be Confirm	
Indoor Noise Level (H/M/L) (dBA)	/	
Dimension (W×D×H)	inch	17-1/2 x 21 x 23-5/8
	mm	445 x 533 x 599
Package (W×D×H)	inch	20-1/2 x 26-1/8 x 25-3/8
	mm	520 x 665 x 645
Net/Gross Weight	lbs	60/69
	kg	27.3/31.3

OUTDOOR SPECIFICATION		
Compressor Type	ROTARY	
Refrigerant	R410A	
Factory Charge Oil	1460±15ml	
Refrigerant Oil	VG74	
Outdoor Air Flow (Max) (CFM)	3035	
Outdoor Noise Level (dBA)	65	
Dimension (W×D×H)	inch	38-5/8 x 14-3/4 x 38-3/8
	mm	980 x 375 x 975
Package (W×D×H)	inch	45-1/8 x 19-5/8 x 42-1/2
	mm	1145 x 500 x 1080
Net/Gross Weight	lbs	204/235
	kg	92.4/106.4

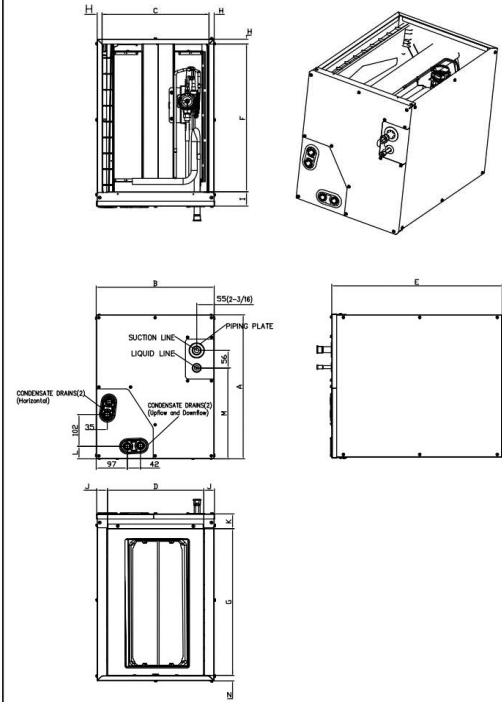
EFFICIENCY			
Cooling		Heating	
SEER2	15.2	HSPF2-4	8.5
EER2	10	COP	To be Confirm
PERFORMANCE of Cooling			
Cooling (Btu/hr)			
Rated (Min/Max)		35000	
Sebsible @ AHRI		To be Confirm	
Moisture Removal		To be Confirm	
Standard Operating Range		5°F~122°F (-15°C~50°C)	
Rated Cooling Conditions: Indoor: 80°F DB/67°F WB Outdoor: 95°F DB/75°F WB			
PERFORMANCE of Heating			
Heating (Btu/hr)			
1. @ 47°F Rated (Min/Max)		36000(To be Confirm)	
2. @ 17°F Rated		To be Confirm	
3. @ 5°F Max: Capacity / COP		30000 / 1.8	
Standard Operating Range		-22°F~75°F (-30°C~24°C)	
1. Rated Heating Conditions: Indoor: 70°F DB/60°F WB Outdoor: 47°F DB/43°F WB			
2. Rated Heating Conditions: Indoor: 70°F DB/60°F WB Outdoor: 17°F DB/15°F WB			
3. Heating Conditions, Compressor Operating at Max. Frequency: Indoor: 70°F DB/60°F WB Outdoor: 5°F DB/5°F WB			

ELECTRICAL	
Power Supply	208/230V, 1Ph, 60Hz
Outdoor/Indoor MCA	30/NA
Connection Wiring	N/A
Outdoor/Indoor MOCP	35/NA
Compressor RLA	21.5
Outdoor Fan Motor RLA	2.5
Outdoor Fan Motor W	To be Confirm
Indoor Fan Motor RLA	/
Indoor Fan Motor W	/
System Power Input @ Cooling (W)	To be Confirm
System Power Input @ Heating (W)	To be Confirm
MCA: Min. circuit amps (A)	MOCP: Max. over current protection (A)
RLA: Rated load amps (A)	W: Fan motor rated output (W)

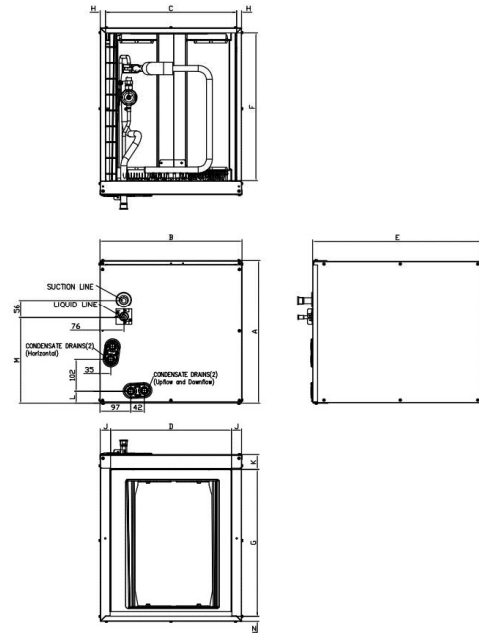
PIPING	
Liquid Size	3/8in (9.52mm)
Gas Size	3/4in (19mm)
Drain Size	5/8in (15.88mm)
Max. Piping Length	213.25ft (65m)
Max. Height Difference	98.4ft (30m)
Max. Pre-charged Length	25ft (7.5m)
Refrigerant Pre-charged Amount	141.1 oz (4000 g)
Additional Charge of Refrigerant	0.69oz/ft (65g/m)
Connection Method	Flared

Indoor Unit Dimension

NEW PANEL STYLE



OLD PANEL STYLE



Dimensions	KV-14F-A		KV-14F-B		KV-17F-A		KV-17F-B		KV-21F-A		KV-21F-B		KV-24F-A	
	NEW PANEL STYLE 18K/20K/22K/24K		NEW PANEL STYLE 30K(未生産)		NEW PANEL STYLE 30K/36K		OLD PANEL STYLE 18K/24K		OLD PANEL STYLE 30K/36K/48K		NEW PANEL STYLE 48K		OLD PANEL STYLE 60K	
Model(Btu/h)	inch	mm	inch	mm	inch	mm	inch	mm	inch	mm	inch	mm	inch	mm
A Model Height	18	457	23-1/2	598	23-1/2	599	18	461	24	609	28	711	28	711
B Model Width	14-1/2	368	14-1/2	368	17-1/2	445	17-1/2	445	21	533	21	533	24-1/2	622
C Supply Air Opening Width	13-1/4	336	13-1/4	336	16-3/16	411	16-3/16	411	19-3/4	502	19-3/4	502	23-1/4	591
D Return Air Opening Width	12	303	12	303	15-1/8	384	15-1/8	384	19-1/2	496	19-1/2	496	23	585
E Model Depth	21	534	21	534	21	533	21	533	21	533	21	533	21	533
F Supply Air Opening Depth	18-5/8	473	18-5/8	473	18-5/8	473	18-5/8	473	18-5/8	473	18-5/8	473	18-5/8	473
G Return Air Opening Depth	18-1/2	471	18-1/2	471	18	458	18	458	18-1/2	470	18-1/2	470	18-1/2	470
H Supply Air Opening Side Clearance	5/8	16	5/8	16	5/8	16	5/8	16	5/8	16	5/8	16	5/8	16
I Supply Air Opening Front Clearance	1-3/4	45	1-3/4	45	1-3/4	45	1-3/4	45	1-3/4	45	1-3/4	45	1-3/4	45
J Return Air Opening Side Clearance	5/8	16	5/8	16	1-3/16	30	1-3/16	30	3/4	19	3/4	19	3/4	19
K Return Air Opening Front Clearance	1-13/16	46	1-13/16	46	1-13/16	46	1-13/16	46	1-13/16	46	1-13/16	46	1-13/16	46
L Condensate Drains Height	1-9/16	40	1-9/16	40	1-7/16	37	1-7/16	37	2-1/8	54	2-1/8	54	2-1/8	54
M Liquid Line Height	11-1/2	292	11-1/2	292	16-1/2	418	10-7/8	276	16-5/16	414	21	533	20-1/4	514
N Return Air Opening Side Clearance	3/4	19	3/4	19	3/4	19	1-3/16	30	3/4	19	3/4	19	3/4	19

Outdoor Unit Dimension

