

SUBMITTAL DATA SHEET



Series Name: **INNOVA 24V Mega Heat with A Coil**

Model Number: **AUO18-30N1-M3H / AUA-36N1-C24**

Heat Pump System

Location: _____
 Engineer: _____
 Submitted to: _____
 Submitted by: _____
 Reference: _____

Approval: _____
 Date: _____
 Construction: _____
 Unit #: _____
 Drawing #: _____



INDOOR SPECIFICATION		
Indoor Air Flow (H/M/L) (CFM)		882
Indoor Noise Level (H/M/L) (dBA)		/
Dimension (W×D×H)	inch	21 x 21 x 24
	mm	533 x 533 x 609
Package (W×D×H)	inch	24 x 26-1/8 x 26-3/8
	mm	610 x 665 x 670
Net/Gross Weight	lbs	67/77
	kg	30.2/35

OUTDOOR SPECIFICATION		
Compressor Type		ROTARY
Refrigerant		R410A
Factory Charge Oil		1000ml
Refrigerant Oil		VG74
Outdoor Air Flow (Max) (CFM)		3000
Outdoor Noise Level (dBA)		62
Dimension (W×D×H)	inch	37-1/4 x 16-1/8 x 31-7/8
	mm	946 x 410 x 810
Package (W×D×H)	inch	42-7/8 x 19-5/8 x 34-7/8
	mm	1090 x 500 x 885
Net/Gross Weight	lbs	160/170
	kg	72.5/77

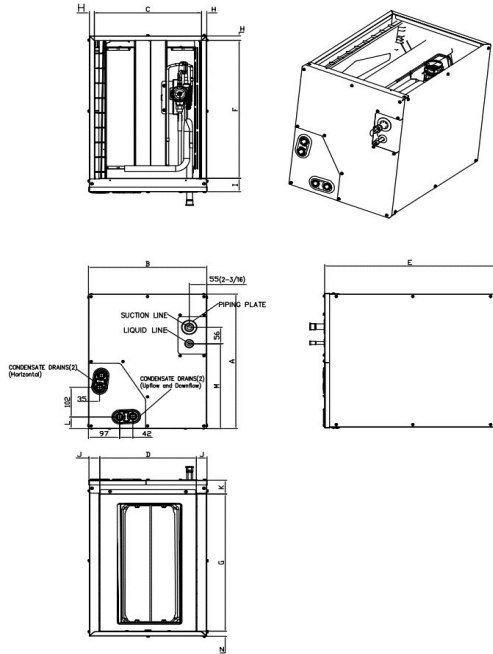
EFFICIENCY			
Cooling		Heating	
SEER2	15.5	HSPF2-4	9.7
EER2	10.5	COP	3.4
PERFORMANCE of Cooling			
Cooling (Btu/hr)			
Rated (Min/Max)	30000		
Sebsible @ AHRI	9900~35000		
Moisture Removal	3.24L/H (6.84pint/H)		
Standard Operating Range	5°F~122°F (-15°C~50°C)		
Rated Cooling Conditions:			
	Indoor: 80°F DB/67°F WB		
	Outdoor: 95°F DB/75°F WB		
PERFORMANCE of Heating			
Heating (Btu/hr)			
1. @ 47°F Rated (Min/Max)	33000(9000~37000)		
2. @ 17°F Rated	22600		
3. @ 5°F Max: Capacity / COP	27000 / 1.85		
Standard Operating Range	-22°F~75°F (-30°C~24°C)		
1. Rated Heating Conditions:			
	Indoor: 70°F DB/60°F WB		
	Outdoor: 47°F DB/43°F WB		
2. Rated Heating Conditions:			
	Indoor: 70°F DB/60°F WB		
	Outdoor: 17°F DB/15°F WB		
3. Heating Conditions, Compressor Operating at Max. Frequency			
	Indoor: 70°F DB/60°F WB		
	Outdoor: 5°F DB/5°F WB		

ELECTRICAL	
Power Supply	208/230V, 1Ph, 60Hz
Outdoor/Indoor MCA	23/NA
Connection Wiring	N/A
Outdoor/Indoor MOCP	35/NA
Compressor RLA	16.5
Outdoor Fan Motor RLA	1.4
Outdoor Fan Motor W	120
Indoor Fan Motor RLA	/
Indoor Fan Motor W	/
System Power Input @ Cooling (W)	2855(660~3720)
System Power Input @ Heating (W)	2845(640~3300)
MCA: Min. circuit amps (A)	MOCP: Max. over current protection (A)
RLA: Rated load amps (A)	W: Fan motor rated output (W)

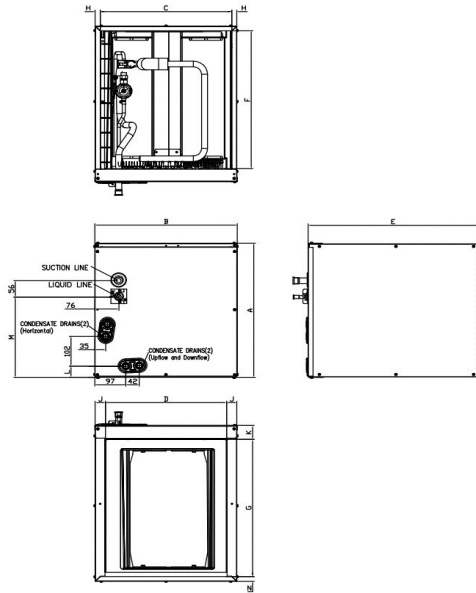
PIPING	
Liquid Size	3/8in (9.52mm)
Gas Size	3/4in (19mm)
Drain Size	5/8in (15.88mm)
Max. Piping Length	164ft (50m)
Max. Height Difference	98.4ft (30m)
Max. Pre-charged Length	25ft (7.5m)
Refrigerant Pre-charged Amount	134.04 oz (3800 g)
Additional Charge of Refrigerant	0.69oz/ft (65g/m)
Connection Method	Flared

Indoor Unit Dimension

NEW PANEL STYLE



OLD PANEL STYLE



Model(Btu/h)	KV-14F-A 18K/20K/22K/24K		KV-14F-B 30K(未投产)		KV-17F-A 30K/36K		KV-17F-B 18K/24K		KV-21F-A 30K/36K/48K		KV-21F-B 48K		KV-24F-A 60K	
	inch	mm	inch	mm	inch	mm	inch	mm	inch	mm	inch	mm	inch	mm
A Model Height	18	457	23-1/2	598	23-1/2	599	18	461	24	609	28	711	28	711
B Model Width	14-1/2	368	14-1/2	368	17-1/2	445	17-1/2	445	21	533	21	533	24-1/2	622
C Supply Air Opening Width	13-1/4	336	13-1/4	336	16-3/16	411	16-3/16	411	19-3/4	502	19-3/4	502	23-1/4	591
D Return Air Opening Width	12	303	12	303	15-1/8	384	15-1/8	384	19-1/2	496	19-1/2	496	23	585
E Model Depth	21	534	21	534	21	533	21	533	21	533	21	533	21	533
F Supply Air Opening Depth	18-5/8	473	18-5/8	473	18-5/8	473	18-5/8	473	18-5/8	473	18-5/8	473	18-5/8	473
G Return Air Opening Depth	18-1/2	471	18-1/2	471	18	458	18	458	18-1/2	470	18-1/2	470	18-1/2	470
H Supply Air Opening Side Clearance	5/8	16	5/8	16	5/8	16	5/8	16	5/8	16	5/8	16	5/8	16
I Supply Air Opening Front Clearance	1-3/4	45	1-3/4	45	1-3/4	45	1-3/4	45	1-3/4	45	1-3/4	45	1-3/4	45
J Return Air Opening Side Clearance	5/8	16	5/8	16	1-3/16	30	1-3/16	30	3/4	19	3/4	19	3/4	19
K Return Air Opening Front Clearance	1-13/16	46	1-13/16	46	1-13/16	46	1-13/16	46	1-13/16	46	1-13/16	46	1-13/16	46
L Condensate Drains Height	1-9/16	40	1-9/16	40	1-7/16	37	1-7/16	37	2-1/8	54	2-1/8	54	2-1/8	54
M Liquid Line Height	11-1/2	292	11-1/2	292	16-1/2	418	10-7/8	276	16-5/16	414	21	533	20-1/4	514
N Return Air Opening Side Clearance	3/4	19	3/4	19	3/4	19	1-3/16	30	3/4	19	3/4	19	3/4	19

Outdoor Unit Dimension

